

60ah and 2600 inverter can maintain external debt



Overview

As a simple rule, to calculate how long a 12v deep-cycle battery will last with an inverter multiply battery amp-hours (Ah) by 12 to find watt-hours, and divide by the load watts to find run time hours. Finally, multiply run time hours by 95% to account for inverter losses. Proper sizing ensures the inverter operates within the safe limits of the battery bank, promoting longevity and effective energy use. What Happens When Your Inverter Is Larger Than Your Battery Bank?

When your inverter is. The table below provides a simplified runtime estimate for a 12V battery under two scenarios: when the inverter is running at full rated load and when it's operating with no load (assuming 5% self-consumption). For use with a decently sized fridge 1.

60ah and 2600 inverter can maintain external debt



How Long Will A 12v Battery Last With An Inverter? Calculator

How many hours can a 12 volt battery run an inverter? As a simple rule, to calculate how long a 12v deep-cycle battery will last with an inverter multiply battery amp-hours (Ah) by 12 to find ...

Is my inverter too big? : r/SolarDIY

My question is, can I still use this inverter with my battery as long as I don't use it up to its 3000w capacity? I don't foresee needing more than 1500-2000w for what I'm trying to do and may want to ...



Inverter to Battery Matching Calculator - SolarMathLab

Using the Inverter to Battery Matching Calculator, you can determine the optimal battery capacity required to power your devices for the desired runtime. This ensures your inverter operates safely, ...

Inverter Sizing: Can Your Inverter

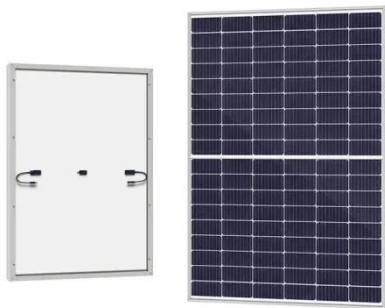
Be Too Big for Your Battery Bank?

When comparing inverter sizes, an adequately sized inverter matches the energy demands of your appliances and the capacity of your battery bank. An inverter that exceeds the ...



Deye Official Store

10 years warranty



Ultimate Guide to Battery in Inverter: Choose & Maintain Right

Whether you live in a region with frequent power cuts or you simply want peace of mind during unexpected outages, understanding how inverter batteries work, how long they last, and how ...

Power Inverter and Battery Life Calculation

Further, when determining the power of the inverter, there is an important principle that when using an inverter, not long-term full-load operation, which would significantly shorten the life of the inverter, the ...



How Big of an Inverter Should I Buy for a 12V 60Ah Battery?

Choosing the correct inverter size ensures your battery system runs

Applications




smoothly without overloads or wasted energy. A mismatched inverter can damage devices, drain your battery faster, or even cause ...

How Long Will A 12V Battery Last With an Inverter - Let's Calculate it

This blog post will be your guide to understanding how long your 12v battery can keep you powered up. We'll explore the factors at play and provide tips to maximize your off-grid experience.




 TAX FREE    

Product Model
 HJ-ESS-215A(100KW/215KWh)
 HJ-ESS-115A(50KW/115KWh)

Dimensions
 1600*1280*2200mm
 1600*1200*2000mm

Rated Battery Capacity
 215KWH/115KWH

Battery Cooling Method
 Air Cooled/Liquid Cooled



Calculate Battery Size For Any Size Inverter (Using Our Calculator)

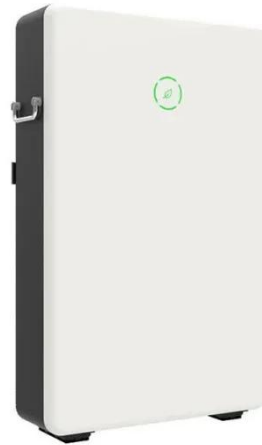
So I have made it easy for you, use the calculator below to calculate the battery size for 200 watt, 300 watt, 500 watt, 1000 watt, 2000 watt, 3000 watt, 5000-watt inverter

How long will a 12v battery last with inverter

Factor 1 - How Many Watts Are in A 12Volt Battery
 Factor 2 - What Is The Depth of Discharge of The Battery
 Factor

4 - What Is The Inverter

Efficiency? Inverter efficiency is a critical factor that directly impacts the overall energy consumption and battery duration in a system. Efficiency refers to how effectively the inverter can convert the DC power from the battery into AC power for your devices. It is usually expressed as a percentage. Efficiency is an important consideration because not all o See more on powmr.glashaus.cc



How Big of an Inverter Should I Buy for a 12V 60Ah Battery?

Choosing the correct inverter size ensures your battery system runs smoothly without overloads or wasted energy. A mismatched inverter can damage devices, drain your battery faster, or even cause ...



How long will a 12v battery last with inverter

To calculate how long a 12V battery will last with an inverter, you need to determine the total power consumption of the inverter and the loads connected to the inverter in watts.

Contact Us

For catalog requests, pricing, or partnerships, please visit:

<https://www.scelto.co.za>

