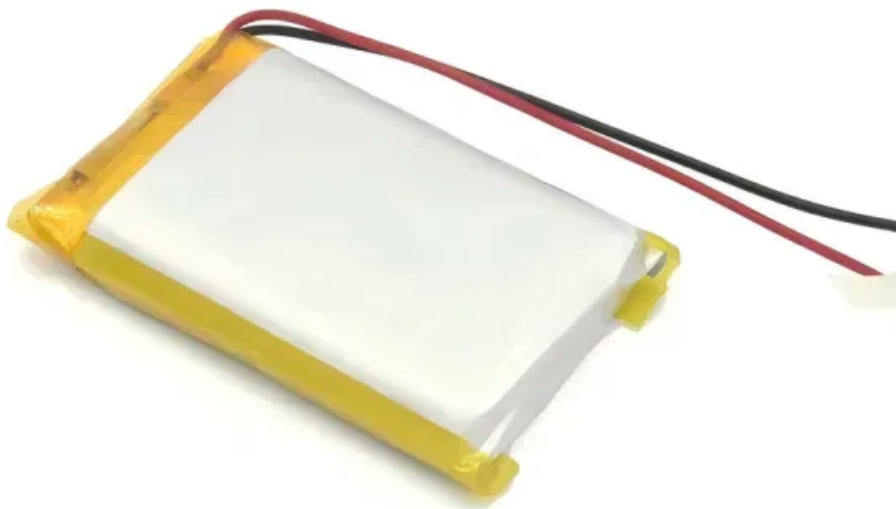


72 solar panel size



Overview

72 cell solar panels are usually designed with six solar cells going across and 12 solar cells going down. 5", however, these can vary slightly depending on the manufacturer. There are 3 standardized sizes of solar panels, namely: 60-cell solar panels size. That's basically a 66×39 solar panel. But what is the wattage?

That is unfortunately not listed at all. 25 feet) and produces 350-450 watts. This size offers the best balance between power output, handling ease, and fitting standard roof dimensions.

72 solar panel size



standard solar photovoltaic panel sizes explained

Knowing if you are dealing with a 60-cell or 72-cell system immediately tells you the expected physical solar photovoltaic panel size, regardless of the manufacturer.

Complete Guide to Solar Panel Size

Knowing if you are dealing with a 60-cell or 72-cell system immediately tells you the expected physical solar photovoltaic panel size, regardless of the manufacturer.

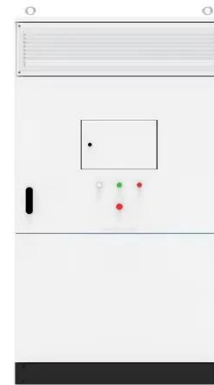


Solar Panel Size & Dimensions Guide 2025 , Complete Specs

Complete guide to solar panel sizes and dimensions. Compare 60-cell vs 72-cell panels, weights, roof space requirements, and installation specs for 2025.

Standard Solar Panel Sizes And Wattages (100W-500W Dimensions)

The dimensions of 72-cell solar panels are as follows: 77 inches long, and 39 inches wide. That's a 77x39 solar panel; basically, a longer panel, mostly used for commercial solar systems. 96-cell solar ...

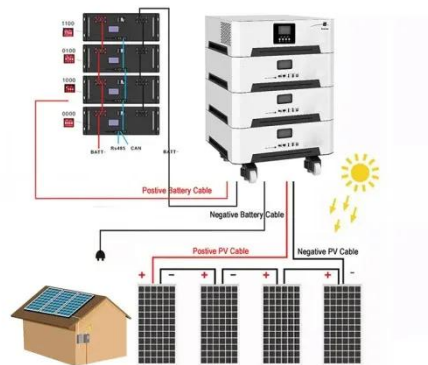


Complete Guide to Solar Panel Size

72- cell panels are bigger, measuring around 6.5 feet by 3 feet, weigh about 50 pounds, and are typically considered commercial solar panels. An average solar panel system requires between 15 to 19 solar ...

Dimensions of Solar Panels

Photovoltaic module of 60 solar cells: 1,635 square meters (1.65 meters x 0.991 meters) Photovoltaic module of 72 solar cells: 1,938 square meters (1,956 meters x 0.991 meters) Note: Larger and more ...



72 Cell solar panels for sale , Buy online for home, boat and RV

72 cell solar panels are usually designed with six solar cells going across and 12 solar cells going down. The average dimensions of a 72 cell solar panel are

about 77" x 40" x 1.5", ...



A Complete Guide to Solar Panel Size , 8MSolar

Commercial solar installations often use 72-cell panels, which are larger than their residential counterparts. These panels measure approximately 80 inches by 40 inches, or about 6.5 ...



What Are the Common Solar Panel Sizes?

The size of solar panels with the same cell count varies slightly, depending on the brand and model. Still, most 60-cell solar panels have a size of 39" X 66" and most 72-cell solar panels ...

Typical Solar Panel Dimensions & Non-Standard Solar Modules

Typical solar panel dimensions are primarily categorized by the number of solar cells, with 60-cell and 72-cell panels being the most common sizes.

Which one do you need? Do bigger ...



72 Cell Solar Panels

72 cell PV modules are primarily used for large commercial, ground mounted and carport solar panel systems. Call (877) 297-0014 for wholesale price and availability. What's the difference between a 60 ...

Contact Us

For catalog requests, pricing, or partnerships, please visit:
<https://www.scelto.co.za>

