

# All four lights on the solar inverter are on



## Overview

---

For detailed information on how to interpret these lights, please view this guide from SolarEdge. ● Green (may appear more yellow) indicates production status ● Blue indicates connectivity ● Red indicates an errors or issues Please note: it is normal to not see any colored LEDs when. Your inverter has a switch and three colored LEDs that indicate system information, such as errors or performance. Any combination of LEDs on. Have you tried shutting off Gateway (Envoy) or Combiner box, waiting a few seconds, then flipping breaker switch back on?

Before doing this, how does the Gateway connect to the internet?

Go to Enlighten app. Menu > System > Devices > Gateway. What is Active?

Idle?

Not Available?

Note the. This document provides a concise guide for understanding the status lights on your SolarEdge inverter. Power Inverters are designed to convert direct current (DC) from a battery or a solar panel array to alternating current (AC) in AC-powered applications. Follow this link to learn what they mean: <https://www.> Signs it works right include steady power, normal lights, and usual sounds.

## All four lights on the solar inverter are on

---



### 10 Solar Inverter Common Issues & How to Troubleshoot FAST

Is your solar inverter not working or showing a fault code? Discover 10 common solar inverter problems & easy troubleshooting tips to restore power quickly.

---

### SolarEdge Inverter Status Light Guide

This document provides a concise guide for understanding the status lights on your SolarEdge inverter. Monitoring these lights helps ensure your solar energy system is functioning ...



### How To Read Solar Inverter Display , Techfine

Your solar inverter display is the control center of your energy system, revealing real-time data about power generation, battery health, and potential faults. Misinterpreting its signals can lead to costly ...

---

### What does it mean when all four

**indicator lights in the inverter are**

After I spotted the blinking lights I came back to the computer to post my question, and in the time it took me to do that three of the four lights went back to solid green and shortly after that they all switched ...

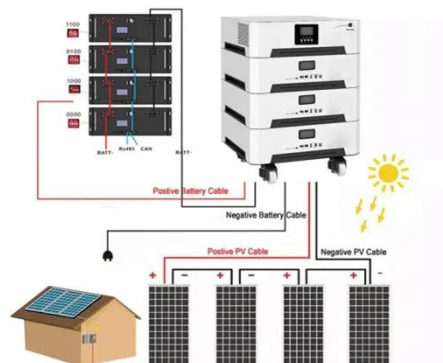


**Solar PV System Management for On**

each inverter that the blue and green lights are on and solid. If a d light is on or blinking, then there may be an inverter error. If the system. is running properly, the green and blue LEDs should always be ...

**What Does The Fault Light Mean On A Power Inverter?**

Inverters typically have a "Green" light to indicate that it is ON and a "Red" light to indicate a problem. The audible sound of the cooling fans running is another cue.



**Inverter Status and System Performance Indications**

Your inverter has a switch and three colored LEDs that indicate system information, such as errors or

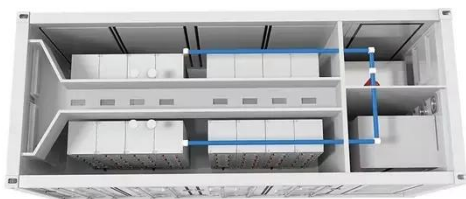


performance. The following tables detail the possible LED and switch combinations, and what they ...

## How to determine if your solar inverter is functioning correctly

Solar inverters have lights to show their status. A green light means the inverter is working fine. Check these lights often to make sure all is okay. A steady or blinking green light (based on the model)

...



## What do the lights on my SolarEdge inverter mean?

The multicolored lights on the SolarEdge inverter tell us different information about the production and communications on your array. Follow this link to learn what they mean: ...

## Determining the Status of Your Solar Array (SolarEdge)

All SolarEdge inverters include a set of colored LED lights that show the current system status.



## What Does The Fault Light Mean On A Power Inverter?

The multicolored lights on the SolarEdge inverter tell us different information about the production and communications on your array. Follow this link to learn what they mean: ...

## Contact Us

For catalog requests, pricing, or partnerships, please visit:  
<https://www.scelto.co.za>

