

Angola 9W solar panel specifications and dimensions



Overview

Technical parameter Maximum Power (W) 250W Optimum Power Voltage (Vmp) 30.76V Short Circuit Current (Isc) 8.91A Mechanical Characteristics Cell Type Monocrystalline 156x156mm (6 inch) No of Cell 60 (6x10pcs).

Standard Residential Panels Optimize Space and Handling: The industry-standard 60-cell panel dimensions (65" × 39" × 1.5") aren't arbitrary - they represent the optimal balance between power output, installation ease, and roof space utilization. At 40-46 pounds, they can be safely handled by.

Example: 5kW solar system is comprised of 50 100-watt solar panels. Alright, your roof square footage is 1000 sq ft. Can you put a 5kW solar system on your roof?

For that, you will need to know what size is a typical 100-watt solar panel, right?

To bridge that gap of very useful knowledge needed. What is a 9 watt solar panel?

The 9 Watt solar panel (9W 6V) is lightweight, waterproof, and designed for long term outdoor use in any environment. Charge Voltaic USB battery packs or a 1S Lilon or LiFePO4 battery. Panel features: Alert me when this product is back in stock. However, the exact dimensions depend heavily on the panel's technology, wattage, and the manufacturer's design. 29 billion from Standard Chartered to finance the.

Angola 9W solar panel specifications and dimensions



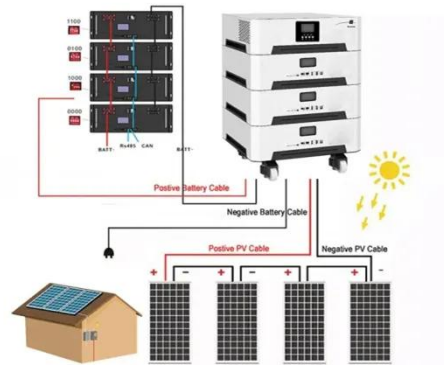
PHOTOVOLTAIC PANEL PRICES IN ANGOLA

Power Your Future With Solar Energy Storage We specialize in solar energy storage solutions, energy storage battery systems, microgrid development, and photovoltaic power generation projects.

9W PHOTOVOLTAIC PANEL SPECIFICATIONS AND DIMENSIONS

...

The 9 Watt solar panel (9W 6V) is lightweight, waterproof, and designed for long term outdoor use in any environment. Charge Voltaic USB battery packs or a 1S Lilon or LiFePO4 battery.



Standard Solar Panel Sizes And Wattages (100W-500W Dimensions)

The goal here is to get to the average solar panel size by wattage. You can find typical dimensions of 100W, 150W, 170W, 200W, 200W, 220W, 300W, 350W, 400W, and 500W solar panels summarized ...

Solar Panel Size & Dimensions Guide 2025 , Complete Specs

Complete guide to solar panel sizes and dimensions. Compare 60-cell vs 72-cell panels, weights, roof space requirements, and installation specs for 2025.



Photovoltaic Roof Panel Specifications and Dimensions: A Complete ...

Understanding photovoltaic (PV) roof panel specifications and dimensions is critical for optimizing energy output, cost efficiency, and structural compatibility. This guide breaks down key technical ...

9w photovoltaic panel specifications and dimensions

The most important solar panel specifications include the short-circuit current, the open-circuit voltage, the output voltage, current, and rated power at 1,000 W/m² solar radiation, all



Solar Panel Size and Wattage Chart: Standard Sizes & Uses for Each

Using a solar panel size chart can help you choose the best types of solar panels for your home or application.



Because the size of a standard solar panel can vary, a chart that outlines the ...

Angola solar panels and battery system

A complete rooftop solar and battery installation, including a 10kWh battery, compatible hybrid inverter and an 8 to 10kW solar array, would typically cost between \$15,000 and \$22,000, depending on the ...



 LFP 12V 200Ah



- IP65/IP55 OUTDOOR CABINET
- IP54/55
- OUTDOOR ENERGY STORAGE CABINET
- OUTDOOR BATTERY CABINET

The Ultimate Guide to Solar Panel Size, Weight & Wattage (2025)

Find the exact solar panel size & weight in our 2025 guide. Our complete chart compares models by ft/cm and lbs/kg to help you plan your installation.

Solar Panel Sizes: Choosing the Right Dimensions for Any Project

Choosing the right solar panel size can make or break your system's performance. In this guide, we break

down how to match your energy needs, roof space, and budget with the ideal panel ...



Contact Us

For catalog requests, pricing, or partnerships, please visit:
<https://www.scelto.co.za>

