

# Are the currents of 150w and 300w solar panels the same



## Overview

---

Solar panels of different watts should not be used together because they have different voltages and amps. The system will always choose the lowest voltage or amp, which will reduce efficiency and power output. While the total wattage is the same, factors like voltage, panel dimensions, wiring needs, and costs can differ substantially between these. In short, the current produced by a solar panel can be calculated by dividing the power rating (in watts) by the maximum power voltage (Vmp). As an example, if the solar panel is rated at 300 watts and the Vmp is given as 12 Volts, the calculation will look like this:  $I = P / V$ . In short, the. These conditions serve as the industry standard for evaluating solar panels, making it easier to compare panels accurately. Imo flexible panels are a very poor choice. You'll often see it referred to as "Rated Power", "Maximum Power", or "Pmax", and it's measured in watts or kilowatts peak (kWp).

## Are the currents of 150w and 300w solar panels the same

---



### Standard Solar Panel Sizes And Wattages (100W-500W Dimensions)

You can find typical dimensions of 100W, 150W, 170W, 200W, 200W, 220W, 300W, 350W, 400W, and 500W solar panels summarized in the chart below. But, just to emphasize the problem, let's have a ...

### What is the current of a 300w solar panel? , NenPower

The current of a 300W solar panel varies depending on several factors, including the panel's voltage, the conditions under which it operates, and its conversion efficiency.

Nominal Capacity  
**280Ah**  
Nominal Energy  
**50kW/100kWh**  
IP Grade  
**IP54**



### Does the current of 150w and 300w solar panels have the same value

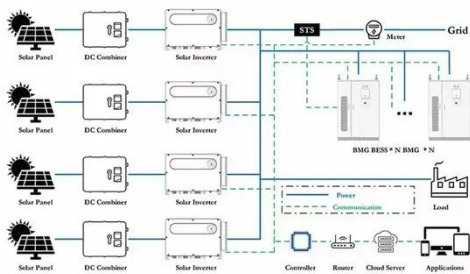
This article compares two common system configurations - 150W 14 panels that produce 2,100 total watts, and 300W 7 panels that also output 2,100 total watts. While the total wattage is the same, ...



## Understanding Solar Panel Voltage

## and Current Output

Decode solar panels specifications to safely connect your panels to power station or charge controller. This quick guide unlocks full solar potential.



## Can You Mix Solar Panels with Different Wattages?

Yes, you can mix solar panels with different wattages--but there's a catch." Explore the electrical science behind mixing panels, learn which connection methods work best, and discover the ...

## Are the currents of 150w and 300w photovoltaic panels the same

Solar panels receive their ratings under specific testing conditions known as "Standard Testing Conditions" or "STCs". These conditions serve as the industry standard for evaluating solar panels, ...



## Can I Use Solar Panels of Different Wattage?

Solar panels of different watts should not be used together because they have different voltages and amps. The system will always choose the lowest voltage or

amp, which will reduce efficiency and ...



---

## What are the rules for mixing panels of

Panels in series limit the current to that generated by the smaller panel, voltage is the sum of the panel volts. Thus panels in series should have similar current outputs.



---

## Difference Between 150w 14 Panels Vs 300 Watt 7 Panels

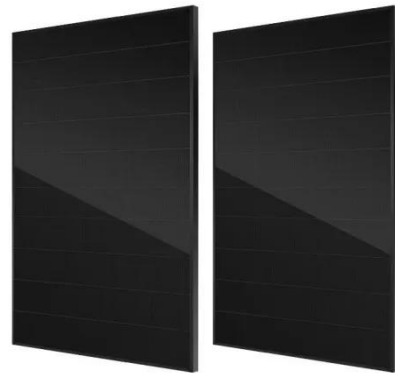
Higher-wattage solar panels will result in increased current output - for instance, a 300W panel may operate at 8 amps whereas a 150W panel would produce around 4 amps. The greater ...

---

## Solar Panel Ratings Explained - Wattage, Current, Voltage, and

Solar panel ratings are crucial for understanding how solar panels perform and what they're capable of. Whether you're setting up a DIY system or a

larger solar installation, these ratings ...



---

## Contact Us

For catalog requests, pricing, or partnerships, please visit:  
<https://www.scelto.co.za>

