

# Area requirements for solar power generation



## Overview

---

A utility-scale solar power plant may require between 5 and 7 acres per megawatt (MW) of generating capacity. Abstract—The rapid deployment of large numbers of utility-scale photovoltaic (PV) plants in the United States, combined with heightened expectations of future deployment, has raised concerns about land requirements and associated land-use impacts. 5 acres/GWh/yr for small 2-axis flat panel PV power plants. Across. When assessing a renewable electricity site and creating a list of possible project locations, consider the types of project options available and the site elements they would require. Generating electricity at the scale necessary to achieve ambitious carbon emission reduction goals requires long-term. What is the minimum area for solar power generation?

The minimum area for solar power generation can vary based on several critical factors, including the efficiency of the solar panels used, the location of installation, and the energy needs being addressed.

## Area requirements for solar power generation

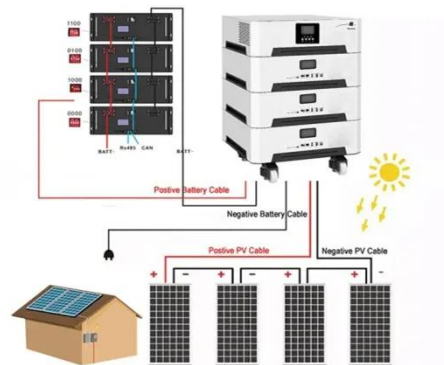


### How much land does a solar power plant require?

How much land does a solar power plant require? Utility scale solar power plants require a significant amount of land due to the number of solar panels required. Modern plants require 5 to 15 acres per MW of capacity.

### Site Considerations , US EPA

Favorable solar sites have access to existing electrical infrastructure, southern exposure to direct sunlight, minimal shading, easy access to the physical project site, and site uses that do not interfere with ...



### How Much Land For 1 Mw Solar Farm: A Quick Guide

Discover how much land for 1 MW solar farm is required, factors influencing size, and maximizing efficiency in our comprehensive guide.

## Land-Use Requirements for Solar

## Power Plants in the United States

We present total and direct land-use results for various solartechnologies and system configurations, on both a capacity and an electricity-generation basis. The total area corresponds to all land enclosed by the site ...

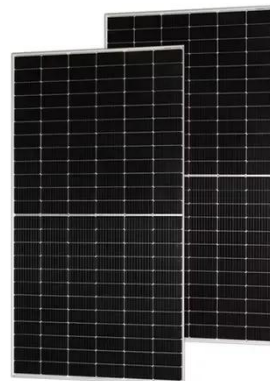


## Site Considerations , US EPA

Discover how much land for 1 MW solar farm is required, factors influencing size, and maximizing efficiency in our comprehensive guide.

## What is the minimum area for solar power generation?

The minimum area for solar power generation can vary based on several critical factors, including the efficiency of the solar panels used, the location of installation, and the energy needs being addressed.



## Area Required for Solar PV Power Plants

Solar power plants require significantly larger land areas compared to conventional power plants. A 100 MW

thermal power plant for instance would require less than 10% of the total area that a 100 MW ...



### Land Requirements for Utility-Scale PV: An Empirical Update on ...

Yet our understanding of the land requirements of utility-scale PV plants is outdated and depends in large part on a study published nearly a decade ago, while the utility-scale sector was still young. We provide updated ...



### Land Use & Solar Development - SEIA

A utility-scale solar power plant may require between 5 and 7 acres per megawatt (MW) of generating capacity. Like fossil fuel power plants, solar plant development requires some grading of land and clearing of vegetation.

### Summary of Land-Use Requirements for Solar Power Plants , YSG Solar

[Click here to download the full report](#)

from the National Renewable Energy Laboratory and gain a greater understanding of the land-use requirements for solar power plants.



---

## Land-Use Requirements for Solar Power Plants in the United States



Across all solar technologies, the total area generation-weighted average is 3.5 acres/GWh/yr with 40% of power plants within 3 and 4 acres/GWh/yr. For direct-area requirements the generation-weighted average is 2.9 ...

---

## Contact Us

For catalog requests, pricing, or partnerships, please visit:  
<https://www.scelto.co.za>

