

China-Myanmar border communication green base station



China-Myanmar border communication green base station



Post "Grand Opening" of China Emphasizing Border

Since post-COVID China's "Grand Opening", China has focused on promoting economic activities and combating transnational criminal activities and has met with Ethnic Armed ...

China takes a multipronged approach to secure its investments in Myanmar

China's main objectives in Myanmar are two-fold, attaining regional stability along the two countries' shared 2,100 km border and preserving Chinese investments.



China's tightrope walk: Mediating in Myanmar , Lowy Institute

Faced with this escalating violence spilling over its border, China has sought to mediate and pressure both the junta and the ethnic armed organisations to negotiate ceasefires.

Myanmar's civil war threatens key

China trade route

The ambitious plan aims to connect China's landlocked south-west to the Indian Ocean via Myanmar. But the corridor has become a battleground between Myanmar rebels and the ...

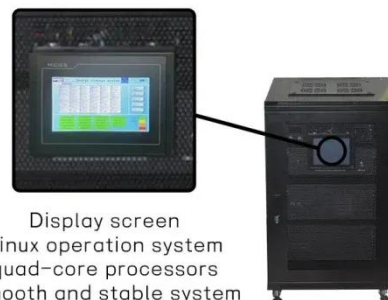


The Making of Border Infrastructures: Evolution and Interaction with

The study offers insights into the future trajectory of border governance in an era of increasing geopolitical tension and examines how the cumulative effects of these infrastructures impact social, ...

Resuming Myanmar-China border trade: Deciphering its connotations

As China's assertive foreign engagement grows, including forms of interference in Myanmar, local governments along the China-Myanmar border are preparing to resume strategic ...



China Reopens Border crossings to MNDAA-Controlled Areas

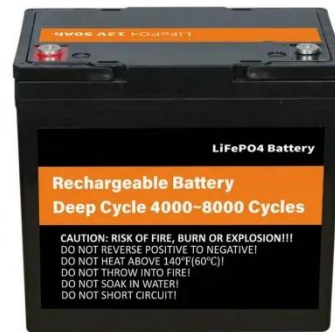
China reopened all its border crossings to areas of Myanmar controlled by the Myanmar National Democratic Alliance



Army (MNDAA) after the junta and MNDAA signed a peace deal.

China-Myanmar border communication green base station

China has built a new, advanced radar facility in Yunnan Province, near the Myanmar border, significantly boosting its ability to provide early warnings about ballistic missiles.



China-Myanmar relations

Though initially maintaining distance with the military junta, China has since moved closer to the military government, pressuring several rebel groups to sign ceasefire agreements with Myanmar's military.

The Making of Border Infrastructures: Evolution and Interaction with

Drawing on extensive fieldwork, in-depth interviews with various stakeholders, and archival data, this paper examines

how infrastructure has shaped, and been shaped by, state policy, ...



Contact Us

For catalog requests, pricing, or partnerships, please visit:
<https://www.scelto.co.za>

