

Energy storage battery side air intake and rear air intake



Overview

Front-to-Rear Flow: Air enters through the front panel and exits at the rear, cooling battery modules in a linear path. Vertical or Horizontal Flow: Depending on system height and installation space, air may flow from top to bottom or side to side to achieve. Electric vehicle battery packs generate significant heat during charging and operation, with cell temperatures potentially reaching 45°C under high load conditions. Managing this thermal load requires precise control of airflow distribution across multiple cells while working within the confined. In air-cooled energy storage systems (ESS), the air duct design refers to the internal structure that directs airflow for thermal regulation of battery modules. Common. What is reverse layered stagger arranged battery configuration optimization?

Reverse-layered stagger-arranged battery configuration optimization In the conventional air-cooling mode, the cooling air flows in from one side and out from the other side without reversal. The invention can dispose the air intake even if the side of the vehicle seat is provided with the rear side gasbag, and prevent the intake of the warm air accumulated in the luggage compartment.

Energy storage battery side air intake and rear air intake

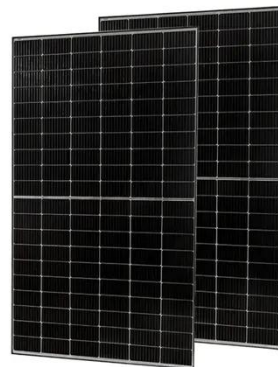


Optimization and experimental validation of the air intake holes of ...

In this study, five different battery pack case designs, each with different sizes and numbers of air intake holes, were determined and modelled using the SolidWorks program. Within the battery pack cases, ...

Air intake structure of vehicle battery

The invention can dispose the air intake even if the side of the vehicle seat is provided with the rear side gasbag, and prevent the intake of the warm air accumulated in the luggage



12.8V 100Ah

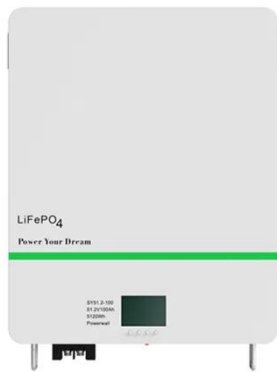


Airflow Design for EV Battery Cooling Applications

Discover techniques for optimizing airflow management to enhance EV battery cooling, boosting performance and extending battery life.

Energy storage battery side air intake and rear air intake

Shi et al. investigated the effect of setting the air inlet on the side wall of the battery pack to the internal temperature field. The results of the comparison of six different inlet location scenarios prove that the ...



A thermal management system for an energy storage battery ...

Four ventilation solutions based on fan flow direction control are numerically simulated, and their internal airflow distribution and thermal behavior are analyzed in detail.

Smart Ventilation: Optimizing Air Ducts in Lithium Battery ESS Cabinets

Front-to-Rear Flow: Air enters through the front panel and exits at the rear, cooling battery modules in a linear path.
Vertical or Horizontal Flow: Depending on system height and ...



Numerical and experimental investigation on extreme optimization of

In response to these limitations, the present study specifically investigates

typical rear air-cooled LFP energy storage battery modules, bridging the gap between theoretical exploration and ...



An optimization study on the performance of air-cooling system for

To provide a reference for the optimized design of air-cooling system for energy storage battery packs, and to promote the development and application of thermoelectric coupling models in ...



Contact Us

For catalog requests, pricing, or partnerships, please visit:
<https://www.scelto.co.za>

