

Flexible support photovoltaic steel weight



Overview

Thickness and weight of photovoltaic panel support steel To find the ideal thickness for various structural requirements for solar panels, engineers usually use industry-standard formulae and structural analysis tools. The answer can be divided into two parts 2 solar. Traditional rigid photovoltaic (PV) support structures exhibit several limitations during operational deployment. Therefore, flexible PV mounting systems have been developed. These flexible PV supports, characterized by their heightened sensitivity to wind loading, necessitate a thorough analysis. According to spec sheets, the only difference between a 670-W utility-scale Titan solar panel with a steel frame and one with an aluminum frame is the steel-framed model is 1. design to flatten the structures. Table 2 compares the steel consumption and the number of pile foundations per MW of the traditional t of each PV panel is around 26kg. Flexible photovoltaic (PV) support structure offers benefits such as low construction costs, large span length, high clearance, and high adaptability t inforced flexible PV support. What are the characteristics of a cable-supported photovoltaic system?

Long span,light weight,strong load capacity,and adaptability to complex terrains.

Flexible support photovoltaic steel weight



Theoretical weight of photovoltaic support steel

1) The document provides equations for calculating the theoretical weight per meter or square meter of various steel products, including round steel rods, deformed steel bars, square bars,

Photovoltaic support steel weight table

At present, the commonly used solar photovoltaic supports are mainly composed of concrete support, steel support and aluminum alloy support. Concrete support is



Thickness and weight of photovoltaic panel support steel

The average weight of a 72-cell solar panel is just over 50 pounds. It has a rough dimension of 6.6 feet by 3.25 feet, which ends up being 2.4 pounds per square foot.

Specifications of photovoltaic panel flexible support base

Solar Panel Specifications: The size, weight, and configuration of the solar panels must be compatible with the mounting system to ensure a secure installation.

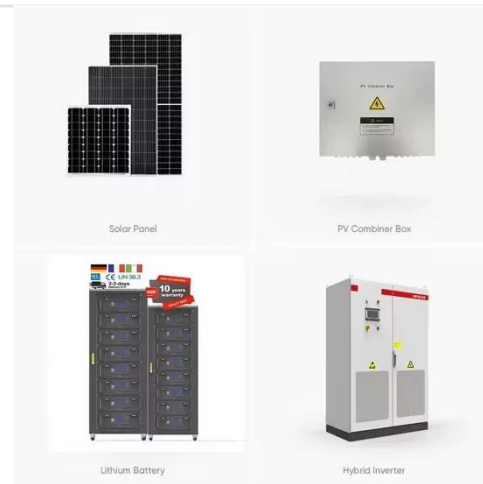


Mechanical characteristics of a new type of cable-supported

The steel I-beams are supported by reinforced concrete (RC) columns and anchored at both ends by stay cables to the ground. The PV modules are 24 kg in weight, 1942 mm in length, ...

Flexible Mounting System

It is a photovoltaic support system supported by suspension structure. The suspension structure consists of a series of tensioned cables as the main load-bearing components. These cables form ...



Experimental study and bearing capacity on the photovoltaic support

Based on the test research and combined with the existing standards, the bearing capacity formulas suitable

for the photovoltaic support brackets and connections with cold-formed ...

12.8V 200Ah



Flexible photovoltaic support steel structure installation

In the photovoltaic (PV) solar power plant projects, PV solar panel (SP) support structure is one of the main elements and limited numerical studies exist on PVSP ground mounting steel frames to be a ...



PHOTOVOLTAIC SUPPORT WEIGHT PER MW

The photovoltaic modules are mounted on supporting structures made of hot-dip galvanized steel, the size of which must support the weight of the modules, the wind speed of 144 km / h (taking into ...

Static and Dynamic Response Analysis of Flexible Photovoltaic ...

These flexible PV supports, characterized by their heightened sensitivity to wind loading, necessitate a thorough analysis

of their static and dynamic responses.



Contact Us

For catalog requests, pricing, or partnerships, please visit:
<https://www.scelto.co.za>

