

# GCL photovoltaic panel size specifications and models



## Overview

---

See the table below for available information we have about GCL System Integration Technology Co. GCL, founded in 2008, is a solar panel manufacturer. Quick facts about GCL solar panels in the EnergySage Buyer's Guide: Are GCL solar panels best for you?

How to choose the right solar panels for. Note: Your Enquiry will be sent directly to TN Solar Co. GCL's 60 cell panels are the ones most likely to be installed on Australian roofs and their datasheets all stat they are certified as corrosion resistant. The GCL-M8/60H has 120 half cut monocrystalline solar cells and is one of. The GCL 450W photovoltaic panel size measures 2,172mm × 1,303mm × 35mm (about 85. Think of it like upgrading from economy to premium economy - same basic shape, but way more legroom for energy.

## GCL photovoltaic panel size specifications and models

---



### PV solar modules (PV Solar Panels)

Along with 30+ years of experience and benefiting from complete PV value chain, we manufacture and offer "Tier 1" top quality PV Solar Modules for all applications and environments including bifacial, ...

### GCL photovoltaic panel model specifications

This manual applies exclusively to the solar photovoltaic module (here in after referred to as Module) of GCL System Integration Technology Co., Ltd. (here in after referred to as GCLSI).



### GCLSI , GCL-M10/72 525-560W , Solar Panel Datasheet , ENF Panel

...

GCL System Integration Technology Co., Ltd. Solar Panel Series GCL-M10/72 525-560W. Detailed profile including pictures, certification details and manufacturer PDF

## GCL System Integration Technology

## Co. Ltd. Solar Panel Information

See the table below for available information we have about GCL System Integration Technology Co. Ltd. solar panels. We do our best to provide information such as the panel dimensions, datasheet, ...



### GCL 450W Photovoltaic Panel Size: What You Need to Know Before

The GCL 450W photovoltaic panel size measures 2,172mm × 1,303mm × 35mm (about 85.5" × 51.3" × 1.4"), making it slightly larger than your average 400W panel but packing 12.5% more power.

### GCL 330W Datasheet

This section offers a comprehensive analysis of the size specifications and ruggedness of the module, shedding light on its ability to withstand diverse climatic conditions and mechanical pressures.



### GCL Solar Panels

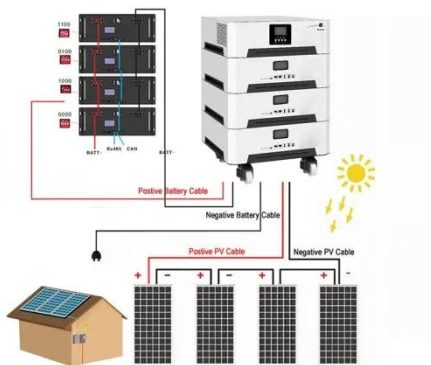
Browse and compare solar panels from GCL. Use this guide to compare solar panel products and understand which is best for your installation.



## GCL photovoltaic panel polycrystalline specifications

When you evaluate solar panels for your photovoltaic system, you will encounter three main categories of panel options: monocrystalline solar panels, polycrystalline solar panels, and thin-film solar panels.

- LIQUID/AIR COOLING
- INTELLIGENT INTEGRATION
- PROTECTION IP54/IP55
- BATTERY /6000 CYCLES



## GCL\_Product\_Flyer\_GCL-P6-72-280\_-\_Tainergy\_ed4

GCL branded modules can be used for both off-grid and on-grid applications. With high-yield efficiency and long-term performance they are ideal for utility, commercial or residential roof-top installations. ...

## GCL-Solar Module , PERC & N-Type Solar Module ...

GCL is a Tier 1 component manufacturer, provides customers with high-quality

clean energy one-stop services



---

## Contact Us

For catalog requests, pricing, or partnerships, please visit:  
<https://www.scelto.co.za>

