

Generator positive pressure exhaust

DETAILS AND PACKAGING



1 USER MANUAL PDF

2 RJ45 Cable For RS485/CAN

3 Battery in Parallel Cables

4 RJ45 TO USB Monitor Cable

5 M8 Terminal*4



Overview

Exhaust back - pressure refers to the resistance that the exhaust gases face as they exit the engine of a diesel generator set. It is measured in units such as inches of water column (inH₂O) or millibars (mbar). Generator exhaust systems for years have been fabricated from sections of schedule 40 carbon steel pipe that are field welded, then insulated to reduce surface temperatures. Modular pre-engineered chimney systems that are factory-fabricated and UL listed have eliminated the need for field-welded. When it comes to safety and total performance, no generator exhaust system delivers the certainty of Schebler. for use with burning gas or liquid as described in NFPA-37 and NFPA-211, which produce exhaust flue gas temperatures not exceeding 1400oF under continuous operating conditions. A generator exhaust system is designed to safely remove combustion gases produced by the generator's engine and release them away from the building, typically through a wall or roof termination. Sections are provided in lightweight, easy-to-handle lengths.

Generator positive pressure exhaust

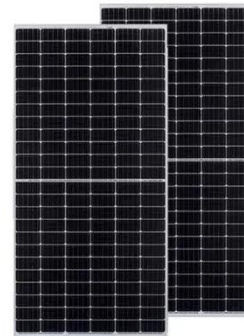


UL Listed Fabricated Products for Generator Exhausts

UL listed fabricated products for generator exhausts for power backup or co-generation are cost-effective in facilities. Learn more from UEP.

What to Know Before Installing a Commercial Generator Exhaust System

In this article, we'll break down how generator exhaust systems work, common design challenges, material choices, code considerations (especially for through-wall exhaust setups), and what to ...



What is the exhaust back

To ensure the proper operation of a 50HZ diesel generator set, it is important to measure the exhaust back - pressure regularly. This can be done using a manometer, which is a simple device that ...

Power Generation

We have put together a selection of stainless steel systems to suit your requirements and needs. A high pressure exhaust system for negative / positive pressure applications. The perfect exhaust gas ...



Generator Exhaust Systems

These factory-built UL systems are engineered to safely handle the high temperatures and exhaust gas pressures. The products ensure a consistent quality, cost effective system compared to field ...

Engine Generator Exhaust Systems

Schebler Chimney and Exhaust Systems Model P4 is a modular double wall prefabricated exhaust system with 4? insulation for use in venting appliances that require a positive, neutral or negative ...



Spec Sheet: Model IPS generator exhaust

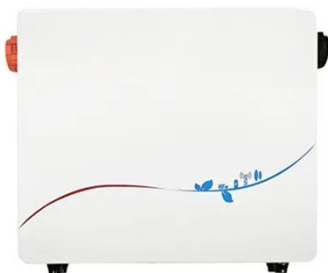
Provide factory-built exhaust system that is tested, listed and labeled by the Underwriters' Laboratories, Inc. for use with burning gas or liquid as described in

NFPA-37 and NFPA-211, which produce ...



Industrial Generator Set Accessories

The accessories described in this spec sheet apply to open units unless otherwise stated. These silencers withstand exhaust flow pressure and temperature without creating excessive engine ...



Generator Exhaust Systems -- Airside Industries

If your generator exhaust system is not designed properly, it could result in resistance to exhaust gas flow. Known as back pressure, this can reduce the efficiency of your generator's engine and raise ...

Generator Exhaust Venting Systems , Schebler Chimney Systems

Prefabricated generator exhaust systems have become the established

replacement for traditional field-welded assemblies, saving time and offering cost-effective safety in handling high temperatures and ...



Contact Us

For catalog requests, pricing, or partnerships, please visit:
<https://www.scelto.co.za>

