

How many degrees is the outdoor solar power hub



How many degrees is the outdoor solar power hub

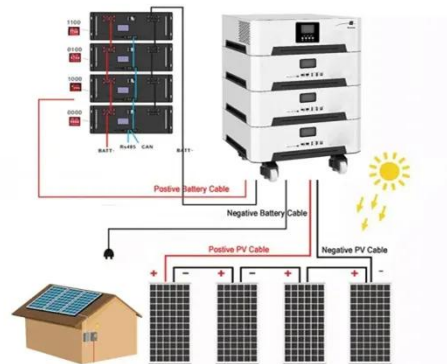


Solar Panel Direction: What is the Best Angle?

Solar panel angle, also known as tilt, refers to the degree at which your panels are inclined relative to the ground. Unlike solar panel direction, the ideal angle for solar panels is a little ...

Maximizing Outdoor Power Supply: How Many Degrees of Electricity ...

Calculating your outdoor power needs doesn't require an engineering degree - just practical understanding of your devices and activities. With solar technology advancing rapidly, solutions that ...



Best Tilt Angle For Solar Panels [Summer + Winter]

The best tilt angle for solar panels depends on your latitude and the season. I will show you how to calculate the most efficient angle for your location.

Solar Panel Direction & Orientation:

2025 Complete Guide

Discover the optimal direction and angle for solar panels to maximize energy output. Complete guide with calculations, tools, and location-specific recommendations for 2025.



How many degrees is solar energy usually set , NenPower

Solar energy systems usually operate best when installed at an angle that averages between 30 and 45 degrees. This range is chosen as it allows collectors to capture a substantial ...

Solar Irradiance Calculator

Our solar irradiance calculator provides estimated W/m^2 readings, hourly charts, monthly averages, and solar panel optimization tools for solar energy planning. Enter a city name, latitude ...



What Is the Best Solar Panel Angle? Understanding Its Importance for

For California homeowners, the best solar panel angle typically ranges from 30 to 45 degrees, varying by specific region and the time of year.



Solar Panel Angle Calculator by Zip Code: best Tilt & Azimuth Angles

Fortunately, solar arrays with tilt variations that fall within 20 degrees will not suffer serious loss. In fact, tilting them some 15 degrees from its optimum angle can have its advantages.



What Is the Best Angle For Solar Panels

The optimal angle for solar panels is anywhere between 15 and 40 degrees according to DOE. Learn how to position your panels for the best sunlight exposure and savings.

What's the Best Angle for Solar Panels? , EnergySage

For maximum output, the sweet spot for solar panels in the continental U.S. is facing roughly south and tilted between 15 and 40 degrees, according to the

Department of Energy. That ...



Contact Us

For catalog requests, pricing, or partnerships, please visit:
<https://www.scelto.co.za>

