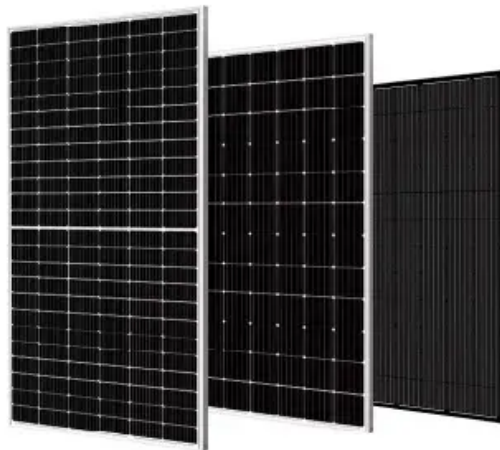


How many strings are usually required for a lithium iron phosphate battery cabinet at a site



How many strings are usually required for a lithium iron phosphate



How many strings and parallels are needed to calculate a set of lithium

The iron-lithium battery is the total voltage divided by 3.2. For example, 48-volt iron-lithium usually refers to 15-16 strings, and the algorithm is basically the same, except that iron-lithium

How many strings are usually in a 48v lithium iron phosphate battery

The whole set of batteries is 14 strings multiplied by 10 cells = 140 cells.
 Summary: Series and parallel have their own advantages for lithium iron phosphate batteries. Series and parallel lithium battery packs have ...



What does lithium battery string mean

For 48V battery packs, ternary lithium batteries generally use 13 strings or 14 strings, and lithium iron phosphate batteries generally use 15 strings or 16 strings. Today, let's talk about the difference between the ...

How many strings of lithium iron phosphate batteries

How many strings should a lithium battery have? Therefore, the lithium battery must also be about 58v, so it must be 14 strings to 58.8v, 14 times 4.2, and the iron-lithium full charge is about 3.4v, it must be four strings of ...



Strings, Parallel Cells, and Parallel Strings

Strings, Parallel Cells, and Parallel Strings Whenever possible, using a single string of lithium cells is usually the preferred configuration for a lithium ion battery pack as it is the lowest cost and simplest. ...

48V lithium battery pack the difference between ternary lithium

...

48V lithium battery pack the difference between ternary lithium 13 string and 14 string For 48V battery packs, ternary lithium batteries generally use 13 strings or 14 strings, and lithium iron phosphate

...



16 strings of lithium iron phosphate batteries placed

How many cells are in a set of lithium



iron phosphate batteries? The whole set of batteries is 14 strings multiplied by 10 cells = 140 cells. Summary: Series and parallel have their own advantages for lithium iron ...

How to Calculate the Number of Lithium Batteries in Series or

Lithium Batteries PACK Lithium battery PACK refers to the processing, assembly and packaging of lithium battery packs. The process of assembling lithium batteries into groups is called ...



How many strings are 48V20AH lithium ion battery packs?

When the lithium iron phosphate battery pack is packaged, different capacities and voltages are generally realized in parallel or in series. In the lithium-ion battery pack, multiple lithium-ion batteries are connected in ...

How many strings are 48V20AH lithium battery packs? How to ...

The whole set of batteries is 14 strings multiplied by 10 cells = 140 cells. Summary: Series and parallel have their

own advantages for lithium iron phosphate batteries. Series and parallel
...



Contact Us

For catalog requests, pricing, or partnerships, please visit:
<https://www.scelto.co.za>

