

How many watts does a 50 square meter photovoltaic panel have



Overview

Here's what's shocking: A single square meter of solar panel can generate anywhere from 150 to 250 watts under ideal conditions. But "ideal" rarely exists in real life. Example: 5kW solar system is comprised of 50 100-watt solar panels. Alright, your roof square footage is 1000 sq ft. Can you put a 5kW solar system on your roof?

For that, you will need to know what size is a typical 100-watt solar panel, right?

To bridge that gap of very useful knowledge needed. This metric shows how much power a solar panel produces per square meter of surface area under standard conditions. This rating represents the peak efficiency under optimal sunlight conditions. Under optimal conditions (5 peak sun hours): At noon under direct sunlight: *Note: 1m². The fundamental formula for calculating solar panel wattage is: $Wattage = Voltage \times Current$ When applied to solar panels, this can be expressed as: $Solar\ Panel\ Wattage = V_{mp} \times I_{mp}$ Where: V_{mp} represents the voltage at maximum power point, indicating the optimal voltage level at which the panel.

How many watts does a 50 square meter photovoltaic panel have



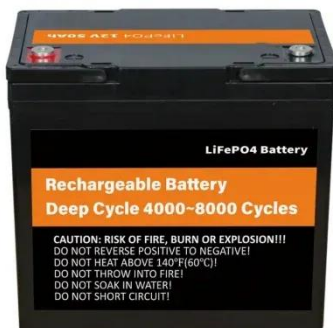
PVWatts Calculator

Estimates the energy production and cost of energy of grid-connected photovoltaic (PV) energy systems throughout the world. It allows homeowners, small building owners, installers and manufacturers to ...

Solar Panel Wattage Calculation: How To Calculate In 2025?

Most residential panels in 2025 have a solar panel wattage rating between 350 and 480 watts, with installers offering panels ranging from 390 to 460 watts on average. Commercial installations often

...



Solar Power Per Square Meter Calculator

A typical solar panel produces 150-250 watts per square meter under standard test conditions (1,000 W/m² irradiance, 25°C). In real-world conditions, expect 120-200W/m² during peak sun hours.

Solar Panel Wattage Calculator

This calculator considers variables such as panel efficiency, sunlight intensity, and environmental conditions, allowing for a more accurate prediction of the electricity a solar panel can generate.



Solar Power per Square Meter Calculator

A solar power per square meter calculator takes details regarding these factors and then gives the accurate output generated by the solar panel per square meter.

Standard Solar Panel Sizes And Wattages (100W-500W Dimensions)

To bridge that gap of very useful knowledge needed, we have compared and averaged the sizes of 100-watt to 500-watt solar panels available on the market. The goal here is to get to the average solar ...



51.2V 150AH, 7.68KWH

How Many Watts Does A Solar Panel Produce

It is important to determine how many watts a solar panel produces to determine the optimal size of the

required solar system. We have discussed the average solar power production, the factors ...



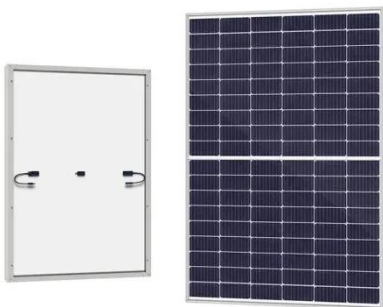
Solar Panel Output Per Square Meter

Discover how much electricity solar panels generate per square meter, explore efficiency factors, technology comparisons, and future innovations in photovoltaic energy.



Solar Panel Watts Per Square Meter Explained

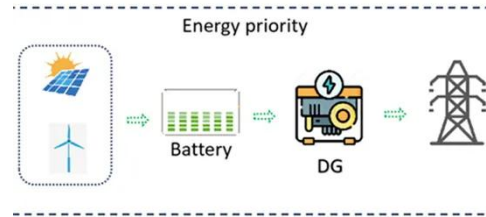
Learn how to measure solar panel efficiency using solar panel watts per square meter with this comprehensive guide.



How many watts does a 50 solar panel have? , NenPower

For a 50-watt solar panel, this rating denotes the amount of power the panel can produce under Standard Test Conditions (STC), which include light

intensity equivalent to 1000 watts per ...



Contact Us

For catalog requests, pricing, or partnerships, please visit:
<https://www.scelto.co.za>

