

How many watts does a solar panel in Sao Tome and Principe have



Overview

According to data from the International Renewable Energy Agency (IRENA), Sao Tome and Principe did not have any grid-connected solar generation capacity installed at the end of 2021. The amount of electricity you can get from each kilowatt of solar panel installed there doesn't change much with the seasons - you'll get around 4. The first step was taken this Wednesday, with the laying of the first stone for the construction of the photovoltaic. Sao Tome and Principe's climate is defined by high temperatures, averaging 22-31°C, consistently high humidity often exceeding 80%, and a saline coastal environment. These factors combine to create a uniquely demanding operational environment for photovoltaic (PV) modules. Constant high humidity. t per unit of capacity (kWh/kWp/yr). The bar chart shows the proportion of a country's land area in each of these classes and the global distribution of land area NREL, measured at a height of 100m. This study is based on 100-watt up to 500-watt panels.

How many watts does a solar panel in Sao Tome and Principe have



Solar Panels for Tropical Climates: A Guide for Sao Tome

While solar panels need sunlight, excessive heat reduces their efficiency. Every module has a 'power temperature coefficient' that defines how much power is lost for each degree Celsius ...

Santo Amaro Photovoltaic Power Plant: Driving Decarbonization of the

With the inauguration of the Santo Amaro photovoltaic solar park with a total electric capacity of 1.7-megawatt, the Government of São Tomé and Príncipe has taken another concrete ...



Solar PV Analysis of São Tomé, São Tomé and Príncipe

The amount of electricity you can get from each kilowatt of solar panel installed there doesn't change much with the seasons - you'll get around 4.9 to 5 kilowatt-hours per day whether it's summer, ...

Every solar São Tomé and Príncipe

Does Sao Tome & Principe have solar power? According to data from the International Renewable Energy Agency (IRENA), Sao Tome and Principe did not have any grid-connected solar generation ...



ENERGY PROFILE Sao Tome and Principe

tors of renewable resource potential
Solar PV: Solar resource potential has been divided into seven classes, each representing a range of annual PV output per unit of capacity (kWh/kWp/yr). The bar ...

Why Solar is São Tomé and Príncipe's Smartest Energy Choice

At Solarvance, we provide tropicalized, salt-resistant solar systems designed for island nations like São Tomé and Príncipe. Whether for a clinic in Príncipe, a guesthouse in São Tomé, or a village mini ...



Sao Tome will produce 540 kwp of solar energy , DGRNE website

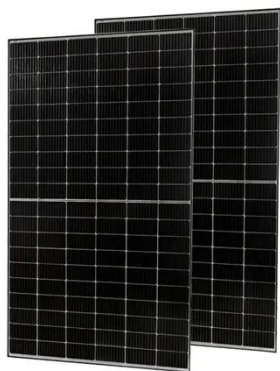
A ceremony presided over by the Prime Minister, Jorge Bom Jesus and the PNUD



Resident Representative, Kasia Wawiernia. Located in the same space as the Santo Amaro thermal power ...

SOLAR PHOTOVOLTAIC PANEL PURCHASE COSTS IN SAO ...

On average, solar panels produce on their own between 4 to 13 amps, depending on the power and voltage rating of the panel. This study is based on 100-watt up to 500-watt panels.



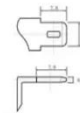
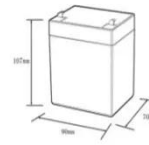
How many watts does a solar panel in Sao Tome and Principe have

The number of solar panels you have will determine how much energy you can produce; solar panels are rated by their output in watts. You must know your monthly energy usage in kilowatt-hours (kWh) ...

Sao Tome and Principe Rooftop Photovoltaic Panels: Powering a

Specializing in tropical solar installations since 2015, we provide customized photovoltaic systems for homes, schools,

and hotels. Our corrosion-resistant designs are built for island conditions.



12.8V6Ah

Nominal voltage (V):12.8
Nominal capacity (ah):6
Rated energy (WH):76.8
Maximum charging voltage (V):14.6
Maximum charging current (a):6
Floating charge voltage (V):13.6-13.8
Maximum continuous discharge current (a):10
Maximum peak discharge current @10 seconds (a):20
Maximum load power (W):100
Discharge cut-off voltage (V):10.8
Charging temperature (°C):0-+50
Discharge temperature (°C):-20-+60
Working humidity: <95% R.H (non condensing)
Number of cycles (25 °C, 0.5c, 100%doD): >2000
Cell combination mode: 32700-4s1p
Terminal specification: T2 (6.3mm)
Protection grade: IP65
Overall dimension (mm):90*70*107mm
Reference weight (kg):0.7
Certification: un38.3/msds

Contact Us

For catalog requests, pricing, or partnerships, please visit:
<https://www.scelto.co.za>

