

How to check the forward and reverse voltage of photovoltaic panels



How to check the forward and reverse voltage of photovoltaic pane

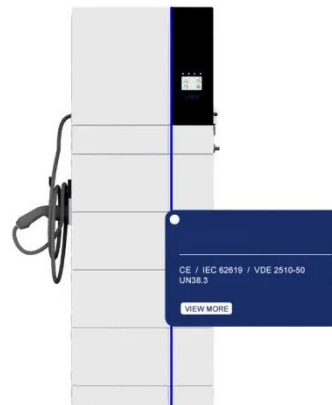


Electrical testing standards guide for the PV Industry

For technicians who are working on photovoltaic (PV) systems, it is critical to measure and document voltage and confirm polarity. These measurements enable technicians to assess the potential for ...

How to Test a Solar Panel: Step-by-Step Guide & Troubleshooting

Learn how to test a solar panel with our step-by-step guide. Check voltage, current, and wattage to ensure optimal performance and efficiency for your solar system.

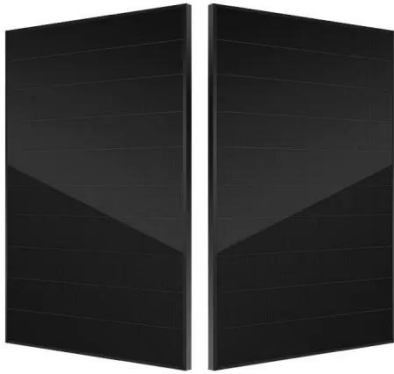


How to Check Solar Panel Polarity (Reverses + Fixes)

Solar panels are polarized to generate more power during the day, but if your system is not set up correctly, you could be wasting valuable energy. Have you ever wondered what "polarity" ...

HOW TO TEST YOUR SYTEM

Measure the voltage between the +ve and -ve terminals by connecting the negative contact from the voltmeter to the negative on the panel and the positive contact on the voltmeter to the positive on the ...



How to Test Solar Panels for Common Problems , Fluke

Learn how to test solar panels and troubleshoot common problems like faulty panels, poor wiring, and inverter issues.

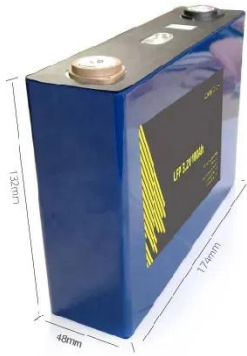
HOW TO TEST A PV MODULE WITH A VOLTMETER?

Testing your PV module with a voltmeter is an essential skill for maintaining your solar system. By regularly measuring the open-circuit voltage and short-circuit current, you can ensure ...



Test Any Solar Panel in Minutes with a Multimeter

I'll show you how to safely check voltage, amperage, and open-circuit power, so you can confirm if your panels are producing the watts you expect.



How to use a polarity tester for solar panels - no51

When working with solar panels, verifying electrical polarity isn't just a best practice--it's a non-negotiable step for safety and system efficiency. A polarity tester, sometimes called a voltage ...



GEL Battery



Lithium Battery



Container storage system



Power Battery

How to Check Solar Panel Polarity

How to Check Solar Panel Polarity: You can use a diode, voltmeter or a multimeter to find the panel's polarity.

Contact Us

For catalog requests, pricing, or partnerships, please visit:
<https://www.scelto.co.za>

