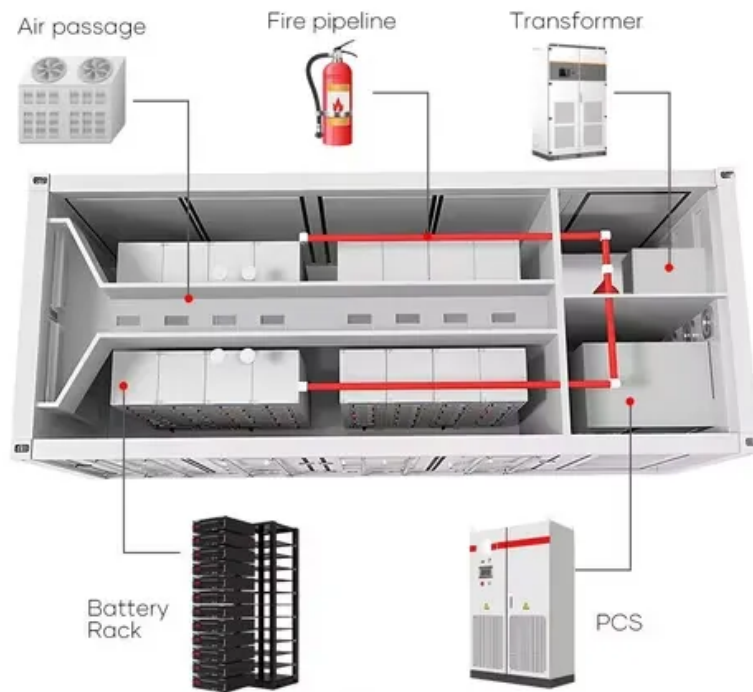


How to install photovoltaic panels without increasing the tilt



Overview

Because the sun's path changes throughout the year, you can fine-tune tilt: Summer Tilt: Latitude - 10° to 15° (flatter to catch high sun). A correctly tilted system can improve efficiency by 5–10% annually, reducing payback time and boosting long-term savings. In this guide, we'll break down. While seemingly straightforward, maximizing energy production often involves tilting the solar panels rather than laying them completely flat. This article dives deep into why tilt matters for solar panels on flat roofs, explores the considerations for determining the best tilt angle (including the. Flat roofs are a popular choice for both residential and commercial solar installations, thanks to their ample space and ease of access. As a general rule, tilt angle = latitude. This keeps panels aligned with the solar altitude angle (the height of the sun above the horizon). If your roof already has a slope close to this, you're in luck.

How to install photovoltaic panels without increasing the tilt



How Does Flat Roof Installation Solve the Problem of Panel Tilt Angle

There are several ways to adjust the tilt of solar panels on flat roofs, each with its own set of advantages: A ballasted mounting system uses weights, such as concrete blocks, to hold the solar ...

How solar panel tilt angle affects PV plant performance

The key to optimizing a project is to increase the distance between parallel rows of panels without excessively increasing the overall size of the installation site.



Best Roof Angle for Solar Panels: Optimize Tilt for Maximum Energy

When roof angle is near the recommended tilt, flush-mounted panels minimize aesthetic and wind concerns. If roof pitch is far from optimal, consider elevated racking or ground-mounted ...

What is the optimal orientation and

tilt angle for solar panels

In the case of "self-consumption" for the PV production, it can make sense to orient the panels east/west rather than south-facing. East-facing panels will produce more energy in the ...



Best Angle for Solar Panel Installation: Complete Guide 2025

Discover the best angle for solar panels in 2025. Learn tilt, direction, and tips to boost efficiency using solar panel angle calculators.

Flat Roof Solar Installation: Complete Guide 2025

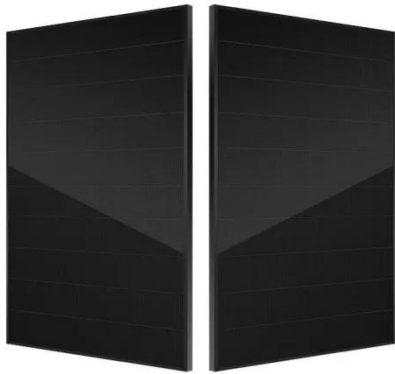
This comprehensive guide explores everything you need to know about installing solar panels on flat roofs, from mounting systems to costs and maintenance requirements.



What's the Best Angle for Solar Panels? Optimum Tilt

By understanding how tilt influences performance, you can make informed choices that improve the efficiency and long-term value of your solar energy

system. This guide explains what ...



Solar Panel Best Angle , Tilt & Orientation Guide 2025

In this guide, we'll break down the science behind the best solar panel angle, explain how to calculate it based on latitude, show seasonal adjustments, and share competitor-winning insights ...



What's the Best Angle for Solar Panels? , EnergySage

Below, we'll get into the finer details of the ideal direction and angle for solar panels, how it varies depending on where you live, and what it takes to truly optimize your panels' electricity output. ...



How solar panel tilt angle affects PV plant performance

This comprehensive guide explores everything you need to know about installing solar panels on flat roofs, from

mounting systems to ...



Optimizing Solar Panels on a Flat Roof: Finding the Best Tilt Angle for

This article dives deep into why tilt matters for solar panels on flat roofs, explores the considerations for determining the best tilt angle (including the common 10-degree standard), and ...

Contact Us

For catalog requests, pricing, or partnerships, please visit:
<https://www.scelto.co.za>

