

Lecong Photovoltaic Steel Support



Lecong Photovoltaic Steel Support

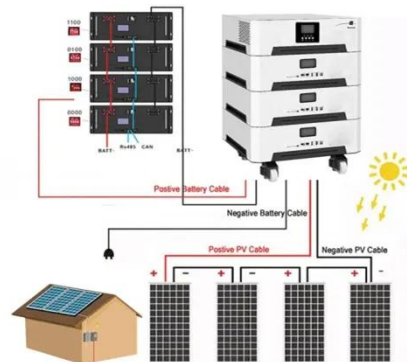


Why Steel Support Systems Are Vital for Scalable Solar Projects , JSW

Steel support structures are often treated as the background of solar infrastructure which is essential yet overlooked. However, these foundational elements directly influence not only the stability of ...

Design and Implementation of PV Mount Systems

This system serves as the structure that supports photovoltaic modules and directly impacts the stability, safety, and power generation efficiency of the photovoltaic power station.



Solar Photovoltaic Support System Steel: Key Considerations for ...

This article explores how steel-based mounting solutions form the backbone of modern solar projects while addressing critical factors like material selection, design optimization, and cost-efficiency.

SOLAR PANEL SUPPORT STRUCTURE SYSTEMS FOR SOLAR PARKS

The metal structures offered by us are ideal for photovoltaic panels (solar panels), and because they are made of light steel profiles designed and manufactured with high precision, the assembly becomes easy and fast.

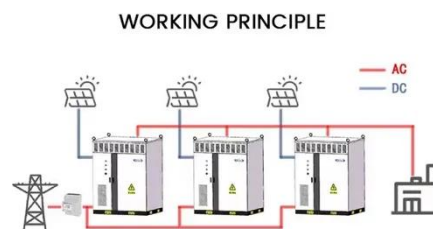


Photovoltaic Support Factory Steel: Optimizing Solar Infrastructure

As solar energy installations grow exponentially - with global capacity projected to reach 4.5 TW by 2030 - the demand for high-performance factory-produced steel supports has never been greater .

Experimental study and bearing capacity on the photovoltaic support

To investigate the mechanical performance and failure characteristics of photovoltaic support bracket and connections with the cold-formed thin-walled high strength steel, 55 specimens of the ...



Steel Structures for Photovoltaic: Roof-Only Applications

Steel structures in photovoltaic systems



serve as the backbone for rooftop solar installations. They are cost-effective and durable, and can function optimally with minimal maintenance for a long period.

Solar Energy Panel Mount C-Section Steel Mounting Support for

C-section steel is a widely used structural component in solar ground mounting systems. It is known for its high strength, durability, and excellent load-bearing capacity, making it ideal for supporting solar panels in various ...



2.6GW! China Power Construction's photovoltaic project is connected to

The project is one of the second batch of large-scale wind power and photovoltaic base construction projects focusing on deserts, Gobi and desert areas in the country, and is also a demonstration ...

Mechanical Performance and Stress Redistribution Mechanisms in

This study involved the analysis of a photovoltaic power generation project in

Hubei Province to compare differences in the structural loads of photovoltaic supports as outlined in Chinese, American, and ...



Contact Us

For catalog requests, pricing, or partnerships, please visit:
<https://www.scelto.co.za>

