

New Energy Storage Connection Terminals



Overview

Energy Storage Quick Plug Terminals (or Battery Storage Plug Terminals) are modular connectors designed for rapid, secure electrical connections in energy storage systems (ESS). They offer: Tool-free mating: Install/disconnect in seconds. High-current handling: 200–600A capacity. In 2019, New York passed the nation-leading Climate Leadership and Community Protection Act (Climate Act), which codified aggressive climate and energy goals, including the deployment of 1,500 MW of energy storage by 2025, and 3,000 MW by 2030. This guide explores their design principles, safety certifications, and performance benchmarks. Ever wondered why your neighbor's solar-powered BBQ never runs out of juice during blackouts, while your system stutters?

The secret sauce might be hiding in components smaller than your thumb – new energy storage connection terminals. These unsung heroes are rewriting the rules of power. Install your energy storage systems quickly, safely, and cost-effectively for applications up to 1,500 V – with pluggable battery connections via busbar connection or via battery pole connector. Designed with mobility, modularity, and flexibility in mind, the TerraCharge.

New Energy Storage Connection Terminals



Energy Storage Quick Plug Terminals: Types, Safety ...

Discover Energy Storage Quick Plug Terminals: types, safety standards, and rapid solutions for ESS. Expert guide with data and FAQs.

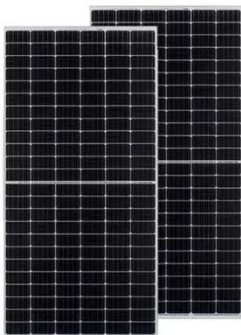
New York Battery Energy Storage System Guidebook for Local

The Battery Energy Storage System Guidebook (Guidebook) helps local government officials, and Authorities Having Jurisdiction (AHJs), understand and develop a battery energy storage system ...



Energy Storage Interconnection Guide

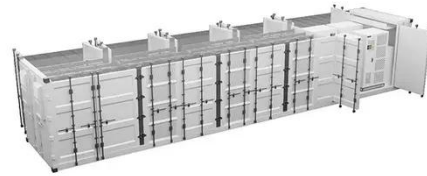
Depending on the size and location of an energy storage project, several different interconnection processes could apply. This document is intended to serve as a guide for energy storage project ...



Battery Energy Storage Connectors:

Types, Safety, Solutions

What Are Battery Energy Storage Connectors? Battery Energy Storage Connectors (or ESS Battery Connectors) are high-current interfaces designed to link battery cells, modules, and ...



Mobile Energy Storage , Power Edison

All systems are equipped with plug-and-play cables with the ability to connect to overhead, ground-level and underground connections. The PCS trailers come equipped with an optional robotic mast, which ...

Connectors for energy storage systems

Find out about suitable electronics and housings for energy storage, and find the ideal connection technology for your requirements. Clear product tables make selection easier for you.



Key advantages of Quick Plug Wire Terminal in new energy storage ...

For anyone working with solar, home, or commercial energy storage--whether



you're an installer, a maintenance technician, or an equipment maker--this terminal solves the three biggest ...

East River Battery Storage

The East River Battery Energy Storage System (BESS) project consists of a new, 100MW generating station utilizing 110 Tesla 2XL Megapacks to provide 100MW of clean power and 400MW hours ...



New Energy Storage Connection Terminals: The Tiny Giants ...

The secret sauce might be hiding in components smaller than your thumb - new energy storage connection terminals. These unsung heroes are rewriting the rules of power reliability, and here's ...



New Energy Storage Wiring Upgrade: 120A-300A Pure Copper Plug ...

Standardized interfaces are compatible with mainstream equipment, promoting

universal wiring for new energy applications. All specifications are currently in mass production, and bulk purchases include ...



Contact Us

For catalog requests, pricing, or partnerships, please visit:
<https://www.scelto.co.za>

