

Photovoltaic panels connected in series can be charged



Overview

Connecting your panels in series will increase the voltage level and keep the amperage the same. The reason why series connections are utilized with MPPT controllers is that MPPT Controllers actually are able to accept a higher voltage input, and still be able to. Connecting more than one solar panel in series, in parallel or in a mixed-mode is an effective and easy way not only to build a cost-effective solar panel system but also helps us add more solar panels in the future to meet our increasing daily needs for electricity. At this stage, it's crucial to align the series configuration with the specifications of your solar charge controller or hybrid inverter. This ensures safety, efficiency, and maximum energy output from your system. It is important to understand these two configurations as we have to estimate our home needs or power storage for. Installing a residential solar panel system can significantly reduce—or eliminate—your electricity bills and ensure your family's energy security during increasingly frequent blackouts.

Photovoltaic panels connected in series can be charged

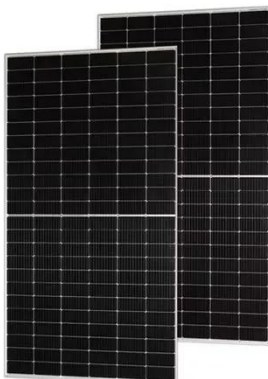


Mixing solar panels - Dos and Don'ts

There are two main types of connecting solar panels - in series or in parallel. You connect solar panels in series when you want to get a higher voltage. If you, however, need to get higher current, you ...

Series Connected Solar Panels For Increased Voltage

All photovoltaic solar panels produce an output voltage when exposed to sunlight and we can increase the voltage output of the panels by connecting them in series. That is connecting solar ...



Guide to Connect Solar Panels in Series - PowMr

Learn how to connect solar panels in series and calculate the maximum number of solar panels in a series string for safe, efficient performance.

How to Wire Solar Panels in Series-

Parallel Configuration?

Depending on the system requirements and design, solar panels and batteries can be connected in series, parallel, or a more complex series-parallel configuration to meet specific needs. ...



Up the voltage: How to connect solar panels in series in 5 steps

Strictly series connections are mostly utilized in smaller systems with an MPPT Controller. Connecting your panels in series will increase the voltage level and ...

Connecting Solar Panels in Series Vs Parallel

When connected in series the battery charges fast rather than parallel. This happens because when connected in series the voltage is increased, which allows more current to flow.



How To Wire Solar Panels In Series Vs. Parallel

Solar panels wired in series increase the voltage, but the amperage remains the same. Solar inverters may have a minimum operating voltage, so wiring in



series allows the system to reach that threshold.

Connecting Solar Panels in Series or in Parallel?

Series wiring increases the sum output voltage of a solar panel array but keeps amperage the same. Parallel wiring increases the sum output amperage of a solar panel array while ...



Series vs. Parallel , Renogy US

Strictly series connections are mostly utilized in smaller systems with an MPPT Controller. Connecting your panels in series will increase the voltage level and keep the amperage the same.

Series Vs Parallel Solar Panels: Wiring Guide & MPPT Tips , SolarTech

MPPT Controllers Unlock Series System Potential: Series configurations require MPPT charge controllers but deliver

10-30% better efficiency than PWM systems. The higher upfront cost is ...



HEAT DISSIPATION

Cold aisle containment,
making optimal refrigeration effect:



Up the voltage: How to connect solar panels in series in 5 steps

If you need to charge batteries or operate devices that require a higher voltage than what a single solar panel can produce, you can connect multiple panels in series to achieve the required ...

Contact Us

For catalog requests, pricing, or partnerships, please visit:
<https://www.scelto.co.za>

