

# Photovoltaic power station inverter at night



## Photovoltaic power station inverter at night

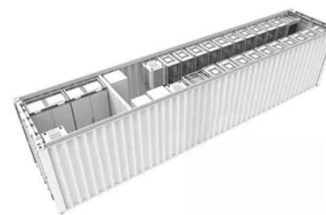


### Why Do Solar Inverters Have A Night Mode?

Solar inverters turn off at night when there is no sunlight to convert into electricity. Solar panels absorb sunlight during the day and convert it into direct current. When there is no sunlight, ...

### What Happens to Solar Inverters at Night? Do They Shut Down?

While solar inverters do not shut down completely at night, they enter a standby or low-power mode to conserve energy and optimize efficiency. This standby mode ensures the inverter ...



### Should I Turn My Hybrid Inverter Off at Night?

In this guide, we'll look at why it's usually better to leave your hybrid inverter on 24/7, when it does make sense to shut it down, and how to protect it so it runs safely and reliably for years.

## Understanding the Q at Night

## Function in Solar Power Inverters

The Q at Night function allows solar power inverters to provide reactive power support even when solar generation is not occurring. This capability is particularly beneficial for maintaining ...



## Do Solar Inverters Turn Off At Night?

Have you ever wondered if solar inverters turn off at night? The answer may surprise you! Solar inverters, the essential components of solar power systems, do not actually turn off when the sun ...

## Does Solar Inverter Work at Night? Unveiling the Facts and

No, a solar inverter does not work at night. This is because solar inverters require sunlight to produce energy, so when the sun goes down, they stop producing electricity. When we ...



## Do Photovoltaic Inverters Generate Reactive Power at Night? Key

Modern PV inverters, even at night, might provide this service--sort of like a backup singer waiting for their cue. At

 **TAX FREE**    

**ENERGY STORAGE SYSTEM**

**Product Model**  
 HJ-ESS-215A(100KW/215KWh)  
 HJ-ESS-115A(50KW/115KWh)

**Dimensions**  
 1600\*1280\*2200mm  
 1600\*1200\*2000mm

**Rated Battery Capacity**  
 215KWH/115KWH

**Battery Cooling Method**  
 Air Cooled/Liquid Cooled



night, solar panels don't generate DC electricity. But if the inverter ...

## Does a Solar Inverter Work at Night? Here's the Real Answer

The short answer is no--solar inverters do not produce or convert energy at night because they rely on sunlight to generate electricity. Solar inverters are designed to convert the DC ...



## Nighttime Reactive Power

Nighttime reactive power support from PV inverters and plants is possible but comes with a cost to keep the plant operational instead of going into sleep mode to reduce losses.

## Contact Us

For catalog requests, pricing, or partnerships, please visit:  
<https://www.scelto.co.za>

