

Public solar base station battery setup



Overview

This guide walks you through the key factors, compliance standards, and climate considerations for installing solar batteries in residential environments—designed for project managers, electrical contractors, and system integrators working with custom ESS (Energy Storage). This guide walks you through the key factors, compliance standards, and climate considerations for installing solar batteries in residential environments—designed for project managers, electrical contractors, and system integrators working with custom ESS (Energy Storage). Each battery occupies a 3ft x 3ft area and is just over 36 inches tall, which is crucial for planning installation space appropriately. The Base installation team tailors configurations to specific site layouts, ensuring efficiency and compliance. Typically, the Base Power system is installed near. Kit (Battery) is used to create stationary battery cells, which can provide big and stable energy storage or energy buffer for your power needs. Any battery slowly loses stored energy. Whether you're a new Stationeers player or looking for advanced tips on tracking solar panels, this video has everything you need! ✂ Learn how to:

- Master solar power in. Whether you're planning a new solar system or looking to retrofit your existing panels, understanding the installation process can save you thousands of dollars and years of regret.

Public solar base station battery setup

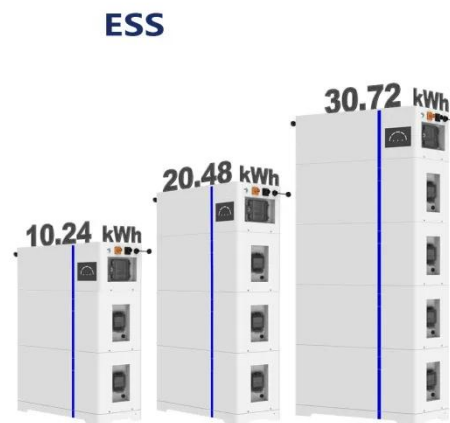


Solar Battery Installation Guide for Residential Projects: Finding the

Learn how integrators choose the best location for residential solar batteries--garage, basement or outdoor enclosure--while meeting NFPA 855, EN 62619 & AS/NZS 5139 requirements.

V5 user manual-PYTES 1.3

Our V series battery pack is designed to provide safe, high-performance energy storage solutions for a variety of applications. The compact and easy-to-install battery pack can be used as a basic building ...

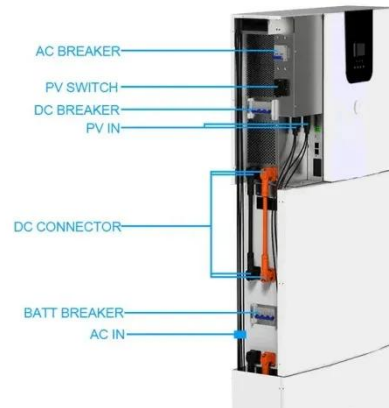


Where can the battery system be installed? What are the electrical ...

Each battery occupies a 3ft x 3ft area and is just over 36 inches tall, which is crucial for planning installation space appropriately. The Base installation team tailors configurations to specific site ...

Stationeers Base Power Guide: Networks & Solar Setup

Complete power distribution guide for Stationeers bases. Master hub-based networks, zone isolation, and solar priority systems with detailed examples.

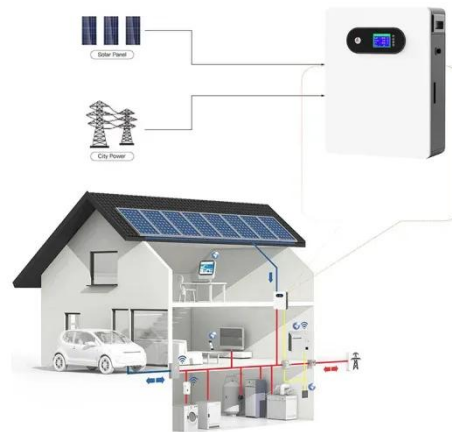


The **ULTIMATE** guide to Stationeers

In this episode, we dive deep into Station Battery mechanics, optimizing your solar power setup, and perfecting Logic I/O.

Solar battery installation guide 2026 - A1 SolarStore ...

Learn how to retrofit a battery to your solar array--step-by-step installation, wiring choices, placement tips and costs.



Setting up a base unit

Get a LiFePO4 battery for the base station to keep that up and running for a while. Or put solar on it and let it self charge to keep it up and running longer.



Station Battery

Never shortcut any battery - no loops! To build a cascade of batteries (e.g. a stationary battery near solar panels and an APC at base power input), separate networks with transformers. ...



Where to install solar batteries in your home



In the U.S., there are rules, regulations, and recommendations to ensure battery installations are completed safely and effectively. In this article, we'll discuss where you should and ...

How to Hook Up Batteries for Solar Power: A Step-by-Step Guide for

Discover how to effectively hook up batteries for your solar power system in our comprehensive guide. Learn about key components, the critical role of

batteries, and the differences ...



Contact Us

For catalog requests, pricing, or partnerships, please visit:
<https://www.scelto.co.za>

