

Pull out the DC terminals of the solar inverter



Back



Side



Front



Top



Bottom



Overview

Ensure the inverter is not connected to AC power. 8 kW variant has two maximum power point trackers (MPPTs), and therefore it can connect up to two DC inputs (on connectors labeled PV 1+ and 2+). These MPPTs are not functional. 6 kW Solar. To decommission the inverter completely upon completion of its service life, proceed as described in this Section. Make sure that each power optimizer is. Disconnecting means and wiring methods for solar installations must meet requirements specific to solar photovoltaic systems. This video is an actual field example of Interplay's Solar Training Simulations.

Pull out the DC terminals of the solar inverter



Quick Installation Guide North America MAN-01-00025-3

After you turn OFF the inverter ON/OFF switch, wait until the LCD indicates that the DC voltage is safe (<50V), or wait five minutes before opening the cover or disconnecting the strings.

Make DC Power Connections

Insert a cabinet tip or electronics tip slotted screwdriver (up to 3.2 mm or 1/8-inch) into the actuation shaft to open the terminal. Insert the conductor as far as possible into the terminal and remove the ...



Connecting DC Input Power Cables

Pull out the blue dustproof plugs from the ends of the DC input connectors. Ensure that the DC input voltage of each PV string does not exceed 1100 V DC using a multimeter and check that the ...

Disconnecting the Terminals from the Inverter

Plug the two-pole connector to which the DC load-break switch is connected into the GSI slot. Remove the battery power cable from the terminals. Remove the DC cables for the PV modules from the ...

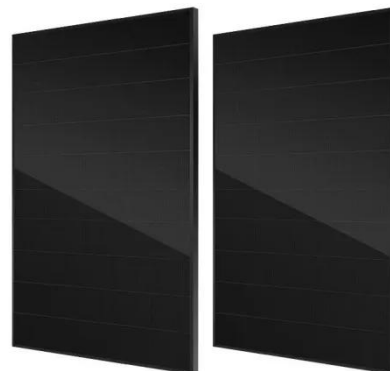


How to remove the terminals of solar photovoltaic panels

All steps involved in removing terminals from solar photovoltaic panels require precision, attention to detail, and adherence to safety standards. Ensuring the right preparation, including safety ...

Tesla Solar Inverter Wiring

AC power output terminals and PV input terminals (MPPT DC inputs) are rated to a minimum of 60°C. AC Power and Communication Wiring (Solar Inverter with Site Controller Only)



How to Read and Understand a Solar Inverter Wiring ...

Find a comprehensive solar inverter wiring diagram for your installation. Understand the components and connections necessary for a successful

solar power system.



Solar, Part 3, based on the 2023 NEC

Be one of the five types listed in 690.13 (E). For example, a pull-out switch with sufficient interrupting rating. An equipment disconnect or isolating device must be provided for ac PV modules, fuses, dc-to ...



Disconnect the terminals on the inverter

Remove the AC cable from the inverter. To do so, loosen the screws (AF5) and pull the cables out of the terminal. Remove the protection elements against contact from the terminal lugs for the DC ...

Contact Us

For catalog requests, pricing, or partnerships, please visit:

<https://www.scelto.co.za>

