

Shore Power Storage



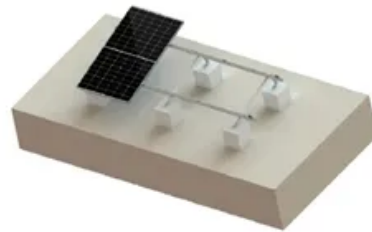
TILE ROOF SOLAR MOUNTING SYATEM



STANDING SEAM ROOF SYATEM



ADJUSTABLE TILT FLAT ROOF SYATEM



TRIANGLE FLAT ROOF SYATEM



Overview

Shore power is essentially the use of a giant electrical plug that allows marine vessels (anywhere from cruise ships to container ships to tugboats) to plug into green electric power while at the dock to eliminat.

Shore Power Storage



Shore Power , MJR Power & Automation

QuayPower(TM) is a cost effective, flexible modular and scalable containerised power conversion solution that provides reliable in port power and charging capabilities for a wide range of vessels, from ...

Energy supply systems for shore power supply in ports

Our customised energy supply systems for supplying ships in the port with shore power make it possible to reduce air pollution, noise and vibrations. An international standard ensures that different types of ...

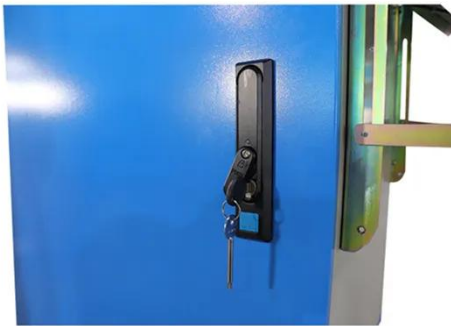


Shore Power Connection , Power Conversion & Storage

Improving production and storage flexibility, maximizing operating efficiency and optimizing grid compatibility and performance. Full-scope system solutions optimizing production times, improving ...

Business case for an offshore construction vessel with a shore power

This analysis outlines a floating battery energy storage platform - referred to as the power barge - capable of delivering high-capacity shore power to offshore construction vessels.



What is shore power and why is it important?

Some of the most innovative applications of shore power are in the marine shore power industry, where there's a wider range of needs for shore power. One such application is for a floating ...

Shore Power Storage Policy: The Secret Sauce for Sustainable Ports

That's shore power in action - and it's revolutionizing maritime sustainability. But here's the kicker: shore power storage policy is what separates the green ports from the fossil fuel dinosaurs.



The Past, Present, and Future of Shore Power , Port of Seattle

Both the pier infrastructure and the maritime vessels themselves must be



equipped with the capability (and the plugs) to use shore power. It's an innovation that was first executed in Seattle ...

Shore power solutions

Shore power solutions from Wärtsilä help ship owners save fuel and reduce their vessels' emissions. Shore power can also be used to charge the vessel's battery.



Contact Us

For catalog requests, pricing, or partnerships, please visit:
<https://www.scelto.co.za>

