

Snow-covered photovoltaic support tracking



Overview

This study addresses a critical gap in the literature by developing a MATLAB/Simulink model that considers the impacts of snow layering and removal on roof-mounted photovoltaic arrays. In January 2026, a radical snow event blanketed many solar PV sites in northern Italy, offering a rare opportunity to study how heavy snow cover influences solar energy production. PV energy losses due to snow—commonly referred to as “snow losses”—can vary widely between locations and time periods. In winter 23-24, our goal was to manually test several snow stow strategies relative to a control. Current goals of this work are to describe the impacts of other. The transition to renewable energy sources is vital for achieving sustainability, and photovoltaic (PV) systems play a key role in this shift. This study addresses. Published estimates of energy losses range from 1 to 12 percent annually, with monthly losses as high as 100 percent, depending on location and weather conditions; in addition, snow creates excessive and uneven stress on modules, cells and systems, the long-term impact of which is unknown.

Snow-covered photovoltaic support tracking

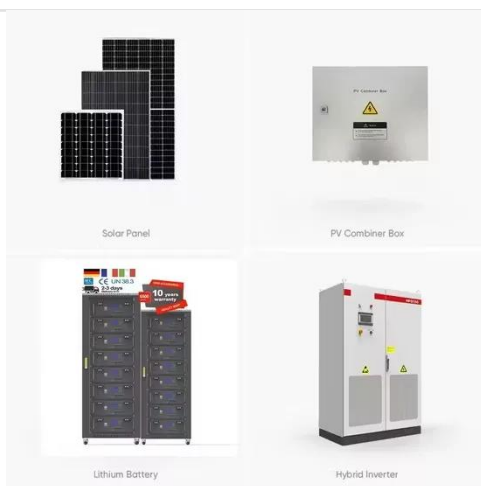


The Impact of Snow on Photovoltaic Energy Storage and ...

Let's delve into the specifics of how snow impacts PV energy storage and explore effective measures to mitigate these effects, highlighting how Sunover tailors PV energy storage ...

Utilizing deep learning towards real-time snow cover detection and

This study introduces a novel deep learning-based method for detecting snow coverage on PV panels for maximizing solar energy conversion. The model achieved a Dice score of 0.81 ...



Boosting Solar Sustainability: Performance Assessment of Roof

The transition to renewable energy sources is vital for achieving sustainability, and photovoltaic (PV) systems play a key role in this shift. However, their performance can be ...

Snow-loss Modeling

Because snow loss calculations are based on accumulated snow, SolarAnywhere loss modeling considers snow depth and ambient temperature data for six months prior to the start time specified in ...



ESS

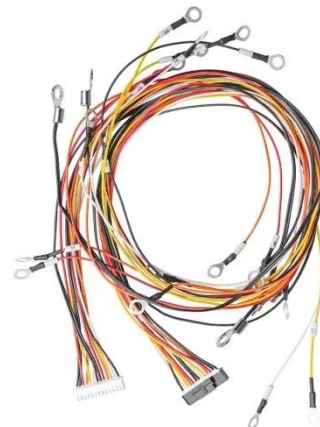


The Impact of Snow on PV Performance - Energy

Our investigation zeroes in on the following research areas, all of which are focused on increasing the performance and reliability of photovoltaic (PV) systems in snowy environments.

Snow impact on PV performance: Assessing the zero

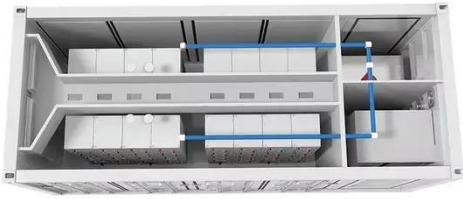
Abstract Solar photovoltaic (PV) technology has a great potential for renewable energy generation. However, in cold climates with heavy snowfall, PV systems performance might be ...



Assessing the Impact of Heavy Snow Cover on Solar PV Performance

Snow impact on solar performance is analyzed using real-world data from a severe winter event in northern Italy, highlighting how heavy snow cover

affects PV output and how advanced ...



PVPMC_Dyreson_Presentation_May7_v4

Wickett and A. Dyreson, "Trends in Solar PV Growth in Snowy Climates and Impact on Resource Adequacy," in IEEE Photovoltaics Specialist Conference, 2023. The objective of this work is to ...



Snow-loss Modeling

Introduction Modeling Snow Losses with SolarAnywhere Using Time-Series Weather Data to Make Snow-Loss Estimates More Site Specific References Accumulated snow can reduce the energy output of a solar PV system by obstructing the sunlight available for energy conversion. PV energy losses due to snow--commonly referred to as "snow losses"--can vary widely between locations and time periods. Estimating snow losses accurately can help PV system owners and financiers reduce financial and operati See more on solaranywhere Sandia National Laboratories[PDF]

PVPMC_Dyreson_Presentation_May7_v4 - Sandia National ...

Wickett and A. Dyreson, "Trends in Solar PV Growth in Snowy Climates and Impact on Resource Adequacy," in IEEE Photovoltaics Specialist Conference, 2023. The objective of this work is to ...

Characterization of Photovoltaic Modules under Uniform Snow Covers

The performance of Photovoltaic modules (PV) is affected in cold climate regions with significant snowfall during the winter season. This paper identifies the electrical characterizations of snow ...



Photovoltaic support snow

The aim of this work is to (i) characterize the effect of snow in PV monitoring data, (ii) to assess and improve on existing PV snow loss models, and (iii) to develop snow

Contact Us

For catalog requests, pricing, or partnerships, please visit:

<https://www.scelto.co.za>

