

Solar panels directly used for inverter



Overview

You can connect a solar panel directly to an inverter and run your appliances. In a grid tied system, the solar panels and inverter do not need a battery because power can be transmitted and sent to. It's appealing to just connect solar panels directly to an inverter, and bypass the safer and more expensive charge controller. Typically, a complete solar power system includes solar panels, a charge controller. Grid-tie and hybrid systems aren't DIY-friendly: not any inverter can be used and you have to know the laws and regulations in the area to perform the installation yourself. Solar panels by themselves produce direct current (DC) under sunlight. While it seems like an easy shortcut, a direct connection isn't a good idea for a stable or safe power.

Solar panels directly used for inverter



Can I connect an inverter directly to a solar panel

A: Connecting an inverter directly to a solar panel can lead to several issues, including overvoltage conditions that can damage the inverter or the solar panel itself.

How to connect solar panels to inverter and battery in 3 steps

Normally, you don't directly connect solar panels to inverter. The voltage of PV modules, even when wired in parallel, is too high for a small off-grid inverter. The inverter will work but high ...



Solar Panel & Power Inverter: Get Stable Power The Right Way

When putting together a solar power system for something like an RV, boat, or a small cabin, you might wonder if you can connect a solar panel directly to a power inverter to keep it ...

How to connect a solar panel to an existing inverter?

If the inverter is designed for direct solar input (as in hybrid or grid-tie inverters), you can connect the solar panel directly to the inverter, provided the voltage and current specifications are ...



Connect Solar Panels To An Inverter: A Step-by-Step Guide

In this guide, I will walk you through a step-by-step process to seamlessly connect your solar panels to an inverter, enabling you to fully enjoy the benefits of solar energy while contributing to a greener and ...

How to connect solar panels to inverter and battery in 3 steps

When putting together a solar power system for something like an RV, boat, or a small cabin, you might wonder if you can connect a solar panel ...



Can You Run an Inverter Directly from a Solar Panel?

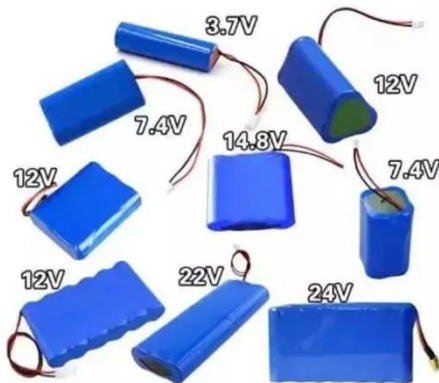
Yes, you can connect to a solar panel without a battery but it is not recommended. This is because the



power being supplied to your inverter will be inconsistent. Realistically, you'll only be able to run ...

Can You Connect Solar Panel Directly to Inverter? 7 Top Cables

In this guide, we'll explore some of the best cables and connectors that make these connections possible, helping you understand how you can connect solar panel directly to inverter ...



Can I Connect My Solar Panels Directly to My Inverter?

While it's technically possible to connect solar panels directly to an inverter, it's not always the safest or most efficient choice. Using a charge controller, proper wiring, and protective ...

How to Connect Solar Panels Directly to an Inverter

You can connect a solar panel directly to an inverter and run your appliances. Solar panels can be plugged directly into an inverter input. In a grid tied system,

the solar panels and inverter do not need ...

Home Energy Storage (Stackble system)



High Efficiency Easy installation Safe and Reliable Perfect Compatibility

Product Introduction

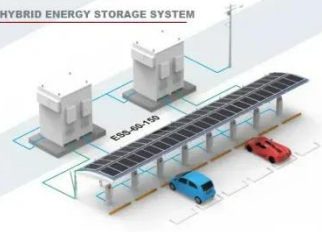
- 1 Scalable from 10 kWh to 50 kWh
- 2 Self-Consumption Optimization
- 3 Integrated with inverter to avoid the compatibility problem
- 4 LFP battery, safest and long cycle life
- 5 Stackable design, effortless installation
- 6 Capable of High-Powered Emergency-Backup and Off-Grid Function

OTHER APPLICATIONS

INDUSTRIAL & COMMERCIAL ENERGY STORAGE SYSTEM



HYBRID ENERGY STORAGE SYSTEM



Can A Solar Panel Be Connected Directly To An Inverter?

Connecting an inverter directly to a solar panel is theoretically possible, but it may not be practical in most cases. The input tolerances of inverters are generally narrow, which means they can't handle ...

Contact Us

For catalog requests, pricing, or partnerships, please visit:
<https://www.scelto.co.za>

