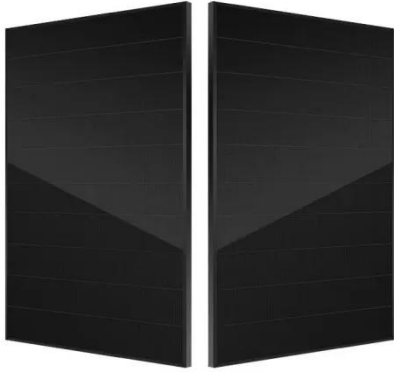


Solar panels in series 300v maximum current



Solar panels in series 300v maximum current



Understanding Solar Panel Voltage and Current ...

Decode solar panels specifications to safely connect your panels to power station or charge controller. This quick guide unlocks full solar potential.

String Voltage and Current Calculation for Different Solar Panel

This article provides a comprehensive analysis of voltage and current calculations for different solar panel configurations, including series, parallel, and hybrid arrangements.



Solar panels in series 300V maximum current

Specs say dual MPPT inputs, 150 maximum maximum volts, and 1200 watts maximum power, each input. I was thinking of stringing for each PV input, three max open circuit 40.7 PV panels in series (122.1 max volts ...



How To Wire Solar Panels In Series:

Complete Guide 2025

Wiring solar panels in series means connecting the positive terminal of one panel to the negative terminal of the next panel, creating a chain that increases total voltage while maintaining the same current. ...



Photovoltaic panels in series 300v maximum current

Photovoltaic panels in series 300v maximum current To determine solar panels rated output, you need to know two figures: the solar panel wattage (measured in watts) and solar panel efficiency (measured in percent). ...

Solar Panel Ratings Explained - Wattage, Current, Voltage, and

An Operating Cell Temperature Range (°C) A Maximum System Voltage rating (Volts) A Maximum Series Fuse rating (Amps) When choosing solar panels, it's important to consider these ratings in ...



Solar Panel Series Calculator

1. What is a Solar Panel Series Calculator? Definition: This calculator determines the total voltage output when solar panels are connected in

series. Purpose: It helps solar installers and DIY enthusiasts design proper ...



Series-Connected Solar Panels: Double Your Power Output ...

Graph comparing power output between single panel and series-connected panels
Connecting two solar panels in series offers a practical and efficient solution for increasing voltage output while maintaining ...



Guide to Connect Solar Panels in Series - PowMr

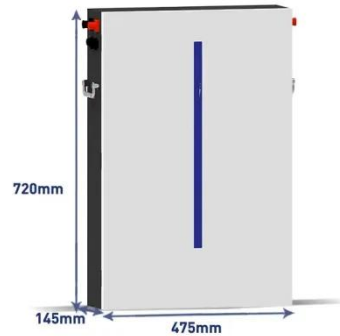
Learn how to connect solar panels in series and calculate the maximum number of solar panels in a series string for safe, efficient performance.



Calculation of optimal series current for photovoltaic panels

Calculation of optimal series current for photovoltaic panels
What is a solar panel series and parallel wattage calculator?

Solar panel series and parallel calculator
the wattage of a solar array in series,
parallel, and ...



Contact Us

For catalog requests, pricing, or partnerships, please visit:
<https://www.scelto.co.za>

