

Specifications for the erection of photovoltaic panels



Overview

Understanding photovoltaic (PV) roof panel specifications and dimensions is critical for optimizing energy output, cost efficiency, and structural compatibility. This guide breaks down key technical parameters, industry trends, and practical considerations to help you Planning. The Renewable Energy Ready Home (RERH) specifications were developed by the U. Environmental Protection Agency (EPA) to assist builders in designing and constructing homes equipped with a set of features that make the installation of solar energy systems after the completion of the home's. That whole system—the panels, the racks, the wiring—has to be engineered to survive. I mean, it needs to be safe and built to last. The way you design and bolt them down completely changes depending on the site. This manual must be used in conjunction with project specific drawings which are provided for each in allation by Solar Foundations USA®, Inc.

Specifications for the erection of photovoltaic panels

Lithium battery parameters

Product capacity: 100Ah

Product size: 135*197*35mm

Product weight: 1.82kg

Product voltage: 3.2V

internal resistance: within 0.5

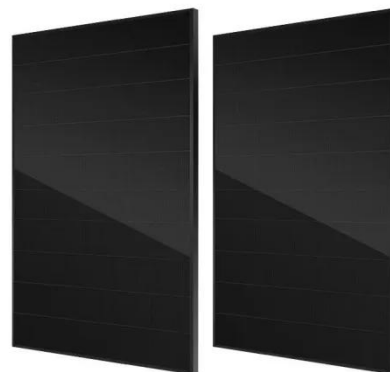


Specifications for the erection of photovoltaic panels

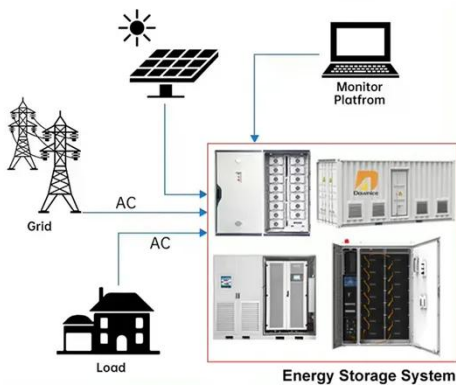
In the photovoltaic (PV) solar power plant projects, PV solar panel (SP) support structure is one of the main elements and limited numerical studies exist on PVSP ground mounting steel frames to

Building Codes for Solar Panel Installation

In this article, we'll dive deep into the ins and outs of building codes for solar panel installation, covering everything from structural integrity and electrical safety to fire prevention and ...



DISTRIBUTED PV GENERATION + ESS



Solar Photovoltaic Specification Checklist and Guide Renewable Home

By following the specification, a builder should feel confident that the proposed array location on a home, built to the RERH specification, will provide a suitable installation environment for a fully operational ...

Technical guide for interpreting and installing solar panels

This detailed guide will help you understand each of the technical aspects of solar panel specifications so you can correctly select and install the modules in your photovoltaic system.



Photovoltaic Roof Panel Specifications and Dimensions: A Complete ...

Understanding photovoltaic (PV) roof panel specifications and dimensions is critical for optimizing energy output, cost efficiency, and structural compatibility. This guide breaks down key technical ...

Solar Photovoltaic: SPECIFICATION, CHECKLIST AND GUIDE

The RERH specifications and checklists take a builder and a project design team through the steps of assessing a home's solar resource potential and defining the minimum structural and system ...



TECHNICAL SPECIFICATIONS FOR ROOFTOP SOLAR ...

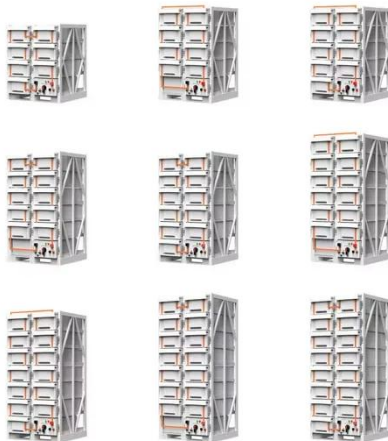
Each array structure of the PV yard, Low Tension (LT) power system, earthing grid for switchyard, all electrical equipment,

inverter, all junction boxes, etc. shall be grounded properly as per IS 3043-2018.



Homeowners Guide To Solar Panel Installation ...

From roof structural requirements to panel sizing and capacity, get complete solar panel installation guidelines for homeowners.



Ground Mount Structure Installation Manual

The Solar Foundations Ground Mount Structure (Rack Mounting System) conforms to UL 2703 Standard for Safety First Edition: Mounting Systems, Mounting Devices, and Ground Lugs for Use with Flat ...

Structural Requirements for Solar Panels -- Exactus Energy

This comprehensive guide outlines the structural requirements for solar panels and provides an overview on the inner

workings of the installation process.



Contact Us

For catalog requests, pricing, or partnerships, please visit:
<https://www.scelto.co.za>

