

Steel usage for photovoltaic single-row column bracket



Overview

All the profiles used in our solar panel structure systems are made of S350-GD galvanized structural steel (from Zn 450 up to ZnMg 310 gr/m²), corrosion resistant, have a very low weight and have a high strength. It can be applied to the solar power station project. The bracket is set up with long and short legs before and after the bracket, and the legs are bolted to the foundation respectively, one end of the diagonal brace is supported at the foot of the long column. Steel solar panel mounting structures are commonly used in industries to mount solar structures or machinery securely. These frames typically have several parts designed to provide stability, support, and durability. Here are some of the standard components found in steel solar panel mounting. A PV bracket is a support structure that arranges and fixes the spacing of PV modules in a certain orientation and angle according to the specific geographic location, climate, and solar resource conditions of the PV power generation system construction.

Steel usage for photovoltaic single-row column bracket



Single column photovoltaic support structure system

The utility model is related to photovoltaic bracket fields, and in particular to a kind of list column photovoltaic support structure system.

Solar panel structures, solar carports, solar field

The metal structures offered by us are ideal for photovoltaic panels (solar panels), and because they are made of light steel profiles designed and manufactured with high precision, the assembly becomes ...



Single column bracket

We mainly design the bracket from safety and economy. The metal profile we use is Q235 steel, hot-dip galvanised treatment, according to customer needs, you can choose stainless steel 304 or hot-dip ...

Understanding Photovoltaic Bracket

Steel Structures: Types, Materials

But what makes steel the go-to material for solar mounting systems? Let's break down the essential types, their unique advantages, and how to choose the right one for your project.



Single row photovoltaic column bracket

A ground-mounted photovoltaic power plant comprises a large number of components such as: photovoltaic modules, mounting systems, inverters, power transformer. Therefore its optimization ...

Steel Mounting Frames in Solar Panel Installations , JSW

Choosing suitable materials for solar panel mounts is crucial to ensure long-lasting performance and durability. Galvalume and galvanised steel are popular due to their corrosion ...



Steel usage of single column photovoltaic bracket

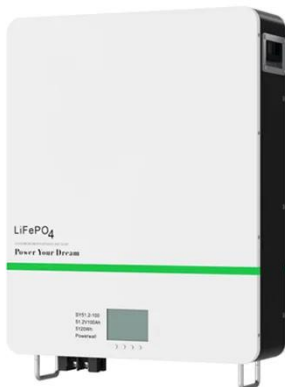
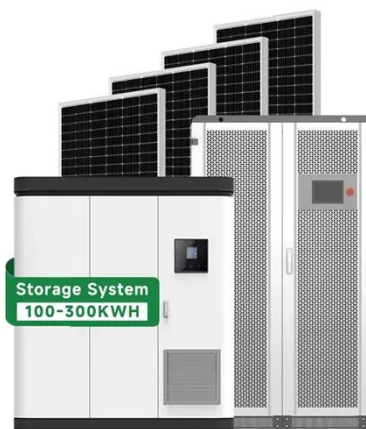
In the photovoltaic (PV) solar power plant projects, PV solar panel (SP) support structure is one of the main

elements and limited numerical studies exist on PVSP ground mounting steel frames to be a ...



Classification And Design Of Fixed Photovoltaic Mounts

The bracket is generally made of stainless steel, aluminum alloy, and other materials, with strong corrosion resistance. Column type bracket is similar in structure to the ground type ...



Single-column carbon steel ground pv system

The single-column carbon steel ground photovoltaic support system is widely used in large-scale photovoltaic power stations, complex terrains, and agricultural photovoltaic systems due to its robust ...

Commonly used solar steel bracket structure type

Single-column PV support structure mainly consists of key components such as main beam, secondary beam, front

support, rear support, steel column,
hoop and monopile foundation, etc.



Contact Us

For catalog requests, pricing, or partnerships, please visit:
<https://www.scelto.co.za>

