

The composition of the solar telecom integrated cabinet wind power system includes



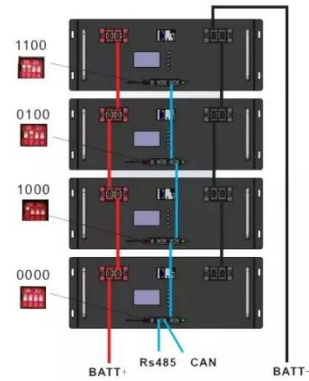
Overview

It combines different power inputs (small wind turbines, solar PV panels, and AC/DC rectifier) with an internal lithium-ion battery for backup, network connectivity, and continuous power for communication. It combines different power inputs (small wind turbines, solar PV panels, and AC/DC rectifier) with an internal lithium-ion battery for backup, network connectivity, and continuous power for communication. The solar wind power system control cabinet is composed by wind turbine module, solar MPPT module, inverter power source, and monitor unit, etc. Understanding the Structure of Outdoor Communication Cabinets. As Architects of Continuity™, Vertiv solves the most important challenges facing today's data centers, communication networks and commercial and industrial facilities with a portfolio of power, cooling and IT infrastructure solutions and services that extends from the. How does the HJ-SG-D03 series combine solar and wind energy to support telecom base stations in remote areas of the United States, Australia, and Canada?

The system integrates a 4.4kW solar panel array and a wind power generation system with a capacity of 600W to 2000W. Managed by AI, the system. Huawei has integrated information and interconnection technologies with power electronics to create the Smart Site Solution — a solution that digitalizes and interconnects intelligent network facilities. Engineered for efficiency and flexibility, these cabinets are ideal for telecom.

Solar Energy Solutions for Telecom

The factory-installed (standard) or field-added NCU is backward compatible with existing NetSure power systems, controlling all aspects of the power chain, including AC mains, DC power plant, battery ...



Smart Power Cabinet Solutions , PDF , Electrical Grid

It integrates multiple energy sources like solar, wind, grid, and batteries into a hybrid system. The cabinet can be configured for solar, grid, and generator systems and supports future expansion.

Communication base station wind and solar hybrid site cabinet

The wind-solar-diesel hybrid power supply system of the communication base station is composed of a wind turbine, a solar cell module, an integrated controller for hybrid energy



Outdoor Communication Energy Cabinet With Wind Turbine

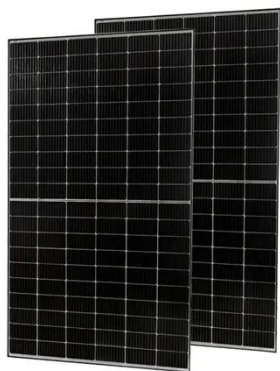
The system integrates a 4.4kW solar panel array and a wind power generation system with a capacity of 600W to 2000W. Managed by AI, the system



ensures low-carbon, energy-efficient, and stable ...

The power system for an outdoor hybrid power supply cabinet

The outdoor hybrid power supply cabinet integrates a robust power system that combines energy generation, storage, and management. Its components, including solar panels, ...



Wind power communication equipment base station energy storage ...

Integrated Solar-Wind Power Container for Communications This large-capacity, modular outdoor base station seamlessly integrates photovoltaic, wind power, and energy storage to provide a stable ...

Contact Us

For catalog requests, pricing, or partnerships, please visit:
<https://www.scelto.co.za>

