

# What voltage does the 1500v solar energy storage cabinet system refer to



## Overview

---

Traditional low-voltage PCS typically operates with a DC-side voltage below 1000V, whereas high-voltage versions, such as ATESS PCS series, elevate the voltage to 1500V. This upgrade is not merely a numerical change but a comprehensive optimization spanning system design to. Compared to older systems, 1500V setups generate more power with fewer strings, less wiring, fewer combiner boxes, and significantly reduced installation labor. And here's a simple electrical truth: higher voltage at the same current means less voltage drop, which translates directly to cost. MEGATRON 1500V 344kWh liquid-cooled and 340kWh air cooled energy storage battery cabinets are an integrated high energy density, long lasting, battery energy storage system. Why do BMS need 1500V DC instead of 1000v?

BESS stations are increasingly using 1500V DC instead of 1000V to improve power. As solar power becomes the backbone of global renewable strategies, the 1500V photovoltaic power supply with panoramic energy storage emerges as a game-changer. This article provides a deep technical comparison to help developers, EPCs, and end-users make informed decisions. So, what advantages does high-voltage PCS offer compared to traditional low-voltage versions?

ATESS's high-voltage PCS achieves a system efficiency. At its core, a 1500V DC energy storage system operates on three key principles: Voltage Scalability: By doubling the voltage from traditional 600-800V systems, it reduces current flow by 50%, minimizing energy losses – like swapping a garden hose for a fire hydrant. Battery Architecture: Uses.

## What voltage does the 1500v solar energy storage cabinet system r

---



### From 1000V to 1500V: A Comparison of High and Low Voltage Energy

Traditional low-voltage PCS typically operates with a DC-side voltage below 1000V, whereas high-voltage versions, such as ATESS PCS series, elevate the voltage to 1500V.

### Why does the voltage drop across a given resistor change when I add

Why exactly does the voltage drop in R1 change when I add another resistor to the circuit? I understand that it has to change according to Ohm's Law ( $V = IR$ ), but how does the amount of charge moving



Warranty  
**10 years**

LiFePO<sub>4</sub>

Intelligent BMS

Wide Temp:  
-20°C to 55°C



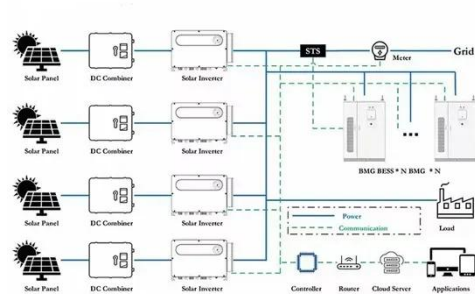
### Understanding the Principle of 1500V DC Energy Storage Systems

Ever wondered how renewable energy projects manage to power entire cities even when the sun isn't shining or the wind isn't blowing? Enter the 1500V DC energy storage system - the ...

## Solar Panel Maximum System

## Voltage 1500V Design Safety ...

Designing 1500V systems isn't just about slapping bigger numbers on spec sheets. Every single component must be rated for 1500V or higher - from wiring and modules to fuse holders, ...



## How to allow smaller clearance between two specific high-voltage nets?

Because there is never a voltage difference between them, I would like the clearance between these two specific nets to be only 0.2 mm, while still keeping 0.6 mm clearance between ...

## MEGATRON 373KWH-MEGACUBE- Global Leading ONE-STOP PV ...

Energy Storage Cabinet MEGATRON 1500V 373kWh liquid-cooled energy storage battery cabinets are an integrated high energy density, long lasting, battery energy storage system.



## 1500v energy storage integrated system

BESS stations are increasingly using 1500V DC instead of 1000V to improve

power density and system efficiency and reduce installation costs. The need to upgrade intelligent high voltage (IHV) to ...



### What exactly is voltage?

The total voltage you get from one out and back, even with a high temperature difference is pretty small. By putting many of these out and back combinations together, you can get a useful voltage. A single ...



### How to reduce DC voltage using resistors?

How would one go about using a 12 V DC power source to power something which needs 4.5 V DC using resistors? Is there a way to determine how much adding a resistor would drop the ...

### How are current and voltage related to torque and speed of a ...

Voltage instead "regulates" how fast a motor can run: the maximum speed a motor can reach is the speed at which the motor generates a voltage (named

"Counter-electromotive force") ...



### **373kWh Liquid Cooled Energy Storage System**

1500V Liquid Cooled Battery Energy Storage System (Outdoor Cabinet). Easily expandable cabinet blocks can combine for multi MW BESS projects.

### **Battery Energy Storage System (BESS)**

Industry-leading high energy density that ensures more power is stored in less space. Unlocks the potential of renewable energy applications with compact, powerful solution, designed for optimal ...



### **1500V Photovoltaic Power Supply & Panoramic Energy Storage**

As solar power becomes the backbone of global renewable strategies, the 1500V photovoltaic power supply with

panoramic energy storage emerges as a game-changer. This advanced configuration ...



## What is "forward" and "reverse" voltage when working with diodes?

The reverse voltage is the voltage drop across the diode if the voltage at the cathode is more positive than the voltage at the anode (if you connect + to the cathode). This is usually much ...



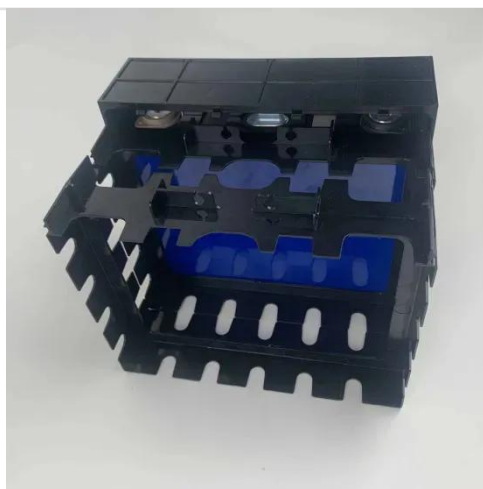
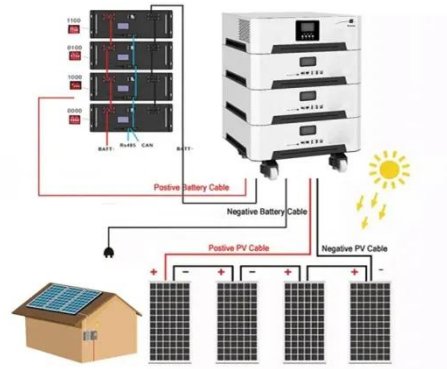
## Voltage of Incandescent Christmas Mini Bulbs [closed]

The simplest solution is to wire an incandescent lamp in series with your lights. The smaller the wattage, the higher the resistance and the more voltage drop you'll get. The problem is ...

## 1500V vs 750V Energy Storage: How to Choose

A 1500V DC ESS has become the mainstream architecture for utility-scale and large industrial energy storage, especially in solar-plus-storage projects.

This trend reflects the industry's ...



### What, exactly, is voltage?

And also if voltage is like gravitational potential energy, how does more voltage mean more current? And here our nice analogy breaks down. In this sense voltage is more like pressure in ...

### 1500V PV Combiner Box for Solar Storage System

The 1500V DC solar combiner box is the new default. Why? It's pure economics. By doubling down on voltage, you slash cable runs and reduce the total count of combiner boxes and ...



## Contact Us

For catalog requests, pricing, or partnerships, please visit:  
<https://www.scelto.co.za>

