

Zinc series battery station cabinets



Zinc series battery station cabinets



BC Series UPS Battery Cabinets

Powered by nickel-zinc battery technology, the BC Series was designed for data centers that demand a safe, reliable, and sustainable way to manage rapid, repeated power surges.

ZincFive BC 2 UPS Battery Cabinets: Powerful Nickel-Zinc ...

Enables fewest cabinets per MW of competing chemistries with unrivaled string reliability. Backward and forward compatibility with megawatt class UPS inverters. Ensures Lower Total Cost of Ownership. ...



Grid Shield CSI INC

The Article discusses the BC 2 UPS battery cabinet designed by ZincFive for data center operators. It emphasizes the cabinet's reliability, power density, sustainability compared to lead-acid and lithium ...

ZincFive BC 2 Nickel-Zinc Battery

Cabinet

o Cabinet design allows for safe and efficient servicing/maintenance of entire battery shelf and easy access to BMS components. o Battery Cabinet ships fully assembled with batteries in the cabinet and ...

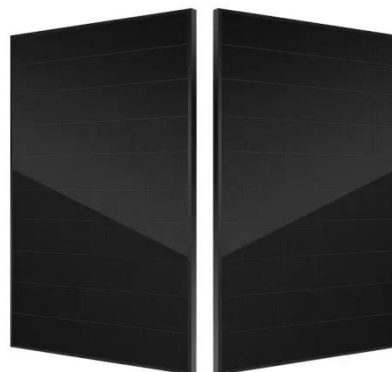


ZincFive BC Series UPS Battery Cabinet

The ZincFive BC Series UPS Battery Cabinets are the first nickel-zinc battery energy storage solution with backward and forward compatibility and megawatt class uninterruptible power supply (UPS) ...

ZincFive BC 2 Series UPS Battery Cabinet Data Sheet, MKT-LIT ...

Refer to ZincFive's BC Series UPS Battery Cabinet Service Manual for storage details. All specifications valid at operating temperature range and subject to change. A safe, reliable and sustainable high ...



ZincFive BC Series Battery Cabinets

The ZincFive UPS Battery Cabinet is the world's first NiZn (Nickel-Zinc) BESS ...



ZincFive BC Series Battery Cabinets

Our technology leverages the safety and sustainability of nickel-zinc chemistry to provide customers reliable, fast-discharge solutions for mission critical applications. Our products excel at ...



Contact Us

For catalog requests, pricing, or partnerships, please visit:
<https://www.scelto.co.za>

